

# Message in a Bottle



## Important Dates to Remember:



April 6

CalWorks Easter Egg Hunt

65th Annual Community Outlook Conference 9-11am

April 7

Scholarship applications due at 4:30pm

April 12

60% Date for Federal Financial Aid

April 18

7th Annual Job Fair

April 21

Pirate's Chest

April 24

Priority Summer Registration Begins

April 25th

Basic Needs Food Bag Distribution

April 29

Summer Open Registration Begins

## CalWORKs Workshop

Thursday, April 6<sup>th</sup>, 2023

Fine Arts Courtyard, 3:30-4:30 p.m.

CalWORKs students  
and their families.

Food, egg hunt and fun!



**Alice Dean at 921-5514.**

**The CalWORKs Easter event is reserved for all CalWORKs students and their families.**



## April is Stress Awareness Month

Palo Verde College recognizes April as Stress Awareness Month. Stress can be debilitating, and it can cause and/or aggravate health problems. And since stress is a normal part of human existence — nobody is immune to it — it's important to arm ourselves with knowledge so that we recognize when stress rears its ugly head.

### How To Observe Stress Awareness Month

- Learn about how stress affects your brain
- Indulge in self care, no matter how big or small
- Learn about how stress affects your health
- Learn more about healthy ways to handle stress



# April is Deaf Awareness Month— Do you know what it means to be deaf-aware?

“There are many resources for learning ASL online. As a beginning ASL student, it's not obvious which resources are reliable or not. In particular, there are many videos made by beginning signers (typically hearing ASL students) that in many cases do not model ASL as it is used by most Deaf people. Furthermore, many examples of "ASL" are heavily influenced by English and related sign systems / languages such as Signed Exact English and Pidgin Signed English. “ Check out this site of online resources for learning ASL and more on the paragraph above—<https://asl.mit.edu/online-resources-asl>

One good example to check out @ASLwithRob on Facebook, Twitter and YouTube for ASL with a certified deaf teacher who is deaf.

 <p><b>THEY WOULD BE THE THIRD MOST POPULATED COUNTRY IN THE WORLD</b></p> <p>There are 466 million people with deafness in the world, so if they were all in the same country, they would be the third most populated country in the world behind China and India. 70 million of these people use Sign Language.</p>	 <p><b>FIVE THINGS YOU DIDN'T KNOW ABOUT THE DEAF</b></p> <p><small>Translation: Sara Gómez Herrera</small></p>	 <p><b>THEY ARE BORN FROM HEARING FAMILIES</b></p> <p>Inbreeding is common among Deaf people. This shocks some hearing people who believe they are perpetuating deafness. The truth is that no one can be blamed: between 90 and 95% of deaf children are born from hearing couples.</p>	
 <p><b>THEY HAVE GOT BETTER PERIPHERAL VISION</b></p> <p>Studies show that Deaf people reach the levels of peripheral vision of an adult in adolescence and that these levels in adulthood remain higher than those of hearing people.</p>	 <p><b>MAYBE THEY DRIVE BETTER</b></p> <p>Statistics show that they are as good or better drivers than hearing people. In the United States, they can even drive heavy commercial vehicles since 2013.</p>	 <p><b>THEY ARE NOT SICK AND THEY DO NOT DIE BEFORE</b></p> <p>Deafness is not a disease nor is it dangerous to health: statistics show that death rates in deaf people are the same as in hearing people.</p>	
<p><b>DISCOVER HOW DEAF PEOPLE AND SIGN LANGUAGE ARE CHANGING THE WORLD</b></p>			<p><b>UNUSUALVERSE.COM</b></p>
<p><small>Sources:          • WHO (2018, march15). Deafness. Retrieved from <a href="https://www.who.int/news-room/facts-in-pictures/detail/deafness">https://www.who.int/news-room/facts-in-pictures/detail/deafness</a>          • WFD. Who we are. Retrieved from <a href="https://wfd deaf.org/who-we-are">https://wfd deaf.org/who-we-are</a>          • Sletten, S.D. (1989). All home among strangers. Washington, DC: Gallaudet University Press, pp.106-134.          • Hamilton, P. T. (2015). Communicating through Distraction: A Study of Deaf Drivers and Their Communication Style in a Driving Environment.          • Barnett, S., y Franks, P. (1999). Deafness and mortality: analyses of linked data from the National Health Interview Survey and National Death Index. Public health reports, 114(4), 330.          • Godina, C., Buckley, D., Port, M., y Pascual, O. (2011). Deaf and hearing children: a comparison of peripheral vision development. Developmental Science, 14(4), 725-737.          • Cooley, D., y Baker-Schell, C. (1991). American Sign Language: A Student Text Units 1-4. Gallaudet University Press, p. 74.          • Kerchner, M.A., y Mitchell, P.E. (2004). Chasing the mythical ten per cent: Parental hearing status of deaf and hard of hearing students in the United States. Sign Language Studies, 4(2), 138-153.</small></p>			

**All submissions are due on  
April 7th at 4:30pm**

**PALO VERDE COLLEGE  
FOUNDATION**  
WHERE KNOWLEDGE TAKES ROOT AND OPPORTUNITY GROWS

**2023 SPRING SCHOLARSHIPS**



**APPLY NOW !!!**

Applications are now available to:  
Half-Time and Full-Time Students!

To APPLY, scan the QR Code or go online to the web address below:  
<http://paloverde.edu/current-students/scholarships>  
Over \$100K Awarded to PVC Students in 2022

**Deadline to APPLY: April 7, 2023**



**NATIONAL DEAF HISTORY MONTH**

This April, we reflect and celebrate our country's deaf and hard-of-hearing predecessors, establishments, and milestones that set a course in advancing our civil, human, and linguistic rights throughout history.

[www.DeafChildren.org](http://www.DeafChildren.org)

**Blythe's 7th Annual Job Fair is being held on campus on April 18th! Be sure to attend, and bring a resume and dress as you would for a job interview. Hope to see you there!**

**Blythe's 7th Annual JOB FAIR (FREE ENTRY)**

**Tuesday, April 18, 2023**  
1:00 - 4:00 P.M.

Palo Verde College  
Clancy Osborne P.E. Center  
1 College Dr., Blythe, CA

**Open Opportunities**  
Bring Resumé - Dress Accordingly





# Coffee with a Cop II

**Pictured: Katie Huff posing with local law enforcement who came to encourage students to pursue law enforcement as a career.**



***Thank you to those who attended the event, Starbucks for coffee & pastries, and a special thank you to local law enforcement who came to educate on their positions. It wouldn't have come together without you all!***



**Picture to the left is Cesar Chavez Day celebration by i3 and Ilona's team making shirts with empowering symbols ironed onto T-shirts that were provided.**

**Below: Pictures of the "Lunch N Paint" for the celebration of Women's History Month taught by Carrie Boice. Both events held on March 29, 2023.**





# *Farewell for Katie*



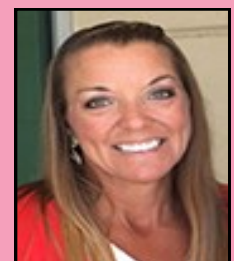
**To students, faculty and staff:**  
**Thank you for your overwhelming kindness, generosity and support as I make this transition from working as a student worker in the ASG office to pursue my dream career as a preschool teacher for the CDC. And a special thanks to Staci Lee and Alice Dean for providing me with an amazing work opportunity. Let me serve as a reminder and inspiration to all: don't let your personal obstacles prevent you from achieving your goals. I'm going to miss working alongside everyone on campus a lot.**  
**-Your ASG secretary, Katie Huff**



## Associated Student Government Officers



<i>Cason Rice</i>	<i>Vacant</i>	<i>Katie Huff</i>	<i>Desiree Felix</i>
<i>President</i>	<i>Vice President</i>	<i>Secretary</i>	<i>Business Manager</i>



<i>Albert Martinez</i>	<i>Dee Dee Dagnino</i>	<i>Nya Jones</i>	<i>Staci Lee</i>
<i>Student Trustee</i>	<i>Historian</i>	<i>Comm. of Publicity</i>	<i>Advisor</i>

**ASG meetings every Tuesday @ 11:00 am all students are welcome to attend!**  
**760.921.5519      [staci.lee@paloverde.edu](mailto:staci.lee@paloverde.edu)**