



# Child Development Center

# PROGRAM REVIEW

(Non-Instructional Program)

October 6, 2015

ONE COLLEGE DRIVE  
SITE: 557 NORTH LOVEKIN  
BLYTHE, CA. 92225

*Providing essential services to the community since 1975*

## 1-A: PROGRAM TERMS AND RESPONSIBILITIES

---

The Palo Verde College Child Development Center is a non-profit organization, operated on a nondiscriminatory basis and gives equal treatment and access to services without regard to race, sex, sexual orientation, gender, disability, color, creed, religion, origin, or ancestry. It is sponsored by the Palo Verde Community College District and the California Department of Education; the program follows the Funding Terms and Conditions set by the California Department of Education in addition to Title 5 and Title 22 bylaws. The purpose of the program is to provide reliable, quality child care to parents who could not otherwise seek and maintain employment and/or training due to parental responsibilities. The Palo Verde College Child Center's mission is to help children develop socially, physically, cognitively, and emotionally. The goal is to help parents by providing a safe, friendly and rewarding environment for their children while they attend school or work. The program's responsibility is not only to provide parents the opportunity for success in life, but provide their children the opportunity of lifelong learning and community development.

## 1-B: DESCRIPTION OF HOW THE PROGRAM SUPPORTS THE OVERALL MISSION OF THE COLLEGE

---

The Child Development center provides quality instruction and services for our parents and children, and applaud the achievements of parents, students and staff. The Palo Verde College Child Development Program and the Palo Verde Community College agree that it is to their mutual benefit that students have the opportunities for field education as students and future practitioners. Just like the Palo Verde College, the Palo Verde College Child Development Center is committed to excellence and encourages parents to continue their education. The Palo Verde College Child Development Program promotes Palo Verde College as an exemplary learning environment with high quality educational programs and services.



*"This Program is a great resource to have in Blythe... I am extremely satisfied with the services"*

## 1-C: POPULATION SERVED BY THE PROGRAM

The Palo Verde College Child Development Center was established to meet the needs of increasing number of working parents and parents enrolled on a vocational training leading directly to a recognized trade or profession. The program is open to all interested parents of the community that are either attending the Palo Verde College, are attending any other type of training or are parents that are working, seeking employment or disabled. To be eligible, parents or guardians must meet the requirements established by the State Department of Education, by Title 5 and Title 22, and the Program Funding Terms and Conditions. In Addition, families shall meet at least one requirement in each of the areas:

1. A family is a current aid recipient, Income eligible, homeless or one whose children are recipients of protective services or whose children have been identified as being abused, neglected or exploited or at risk of being abused.
2. The parents are engaged in vocational training leading directly to a recognized trade, paraprofessional or profession.
3. The parents are employed or seeking employment
4. The parents are incapacitated and not able to care for the child/ren.

The program also serves as community support by offering their facility to colleagues and students that attend the Palo Verde College.

- Licensed Vocational Nurses (LVN Students)
  - Every school year we have students scheduled to do their educational experience 3 days per week, 6 ½ per day.
- Students who take Early Childhood Units
  - Students attending the Palo Verde College that need to do their practicum
  - Student workers which goal is to become teachers
- Colleagues
  - People working as Early Childhood educators that have an obligation to contribute to the education of their students with needs of field experience.



*"My child loves this program & enjoys coming to school every day"*

## 2-A: ACCOMPLISHMENTS IN ACHIEVING GOALS IN PREVIOUS PROGRAM REVIEWS

The Palo Verde College Child Development Program is based on the premise that all children share certain needs and those children of families with limited resources can benefit from a comprehensive developmental program designed to meet those needs.

GOAL 1: To maintain full enrollment in the program throughout the school year. Palo Verde College Child Development program is funded through the California Department of Education and must meet apportionments on monthly basis; the program has had full enrollment throughout the school year and has been meeting apportionments every year.

GOAL 2: To provide excellent services to the community, students and colleagues. Activities in the classroom are done accordingly to program requirements, the program classrooms are equipped with adequate materials for the children, and Classrooms have computers and computer's games for all children enrolled in the program. On 2009 the program was reviewed by the Child and Adult Care Food Program and all areas were found to be in compliance. On 2012, the program purchased 2 new signs and they are now located in front of the facility. On 2013, the program purchased two new playhouses for the playground, on 2013, the program purchased two new scooters. The program Continues participating on special events such as Day of the Child, events for Christmas, welcome back dinner, Spring Street festivities, early education conferences and classes, etc. and this allows us to continue being involved with the community and families.

2012-2013 Fiscal Year	To meet monthly apportionments the Palo Verde College Child Development Program had 36 children enrolled regular full-time, plus 4 full-time Spanish Speakers, making a total of 40 children enrolled full-time in the program.
2013-2014 Fiscal Year	To meet monthly apportionments the Palo Verde College Child Development Program had 36 children enrolled regular full-time, plus 3 Spanish speakers and 1 Special needs with IEP (Individualized Educational Plan), making the total of 40 children enrolled.
2014-2015 Fiscal Year	To meet monthly apportionments the Palo Verde College Child Development Program has 35 regular full-time students, plus 2 Spanish Speakers, 2 Special Needs with IEP's and one part-time student; making a total of 40 children enrolled.



*"I like the way other programs come to the school and offer assistance for families"*

## 2-B: EXPLAIN MODIFICATION OF GOALS OUTLINED IN THE PREVIOUS PROGRAM REVIEW,

---

a

- Goal 1: Continue participating on special events to educate the community and family Members about the program in efforts to continue to be fully enrolled. To use the community media (radio, newspaper, and website) to recruit new students. Our goal is to meet the parents' and children's needs while their children are enrolled in the program.
- Goal 2: Continue providing a welcoming working and teaching environment. By attending Trainings, classes and conferences, teachers are educating themselves with new tools to continue assisting parents and educating preschool children by using new ideas and at the same time meeting program requirements. Our goal is to meet the parents' and children's needs while their children are enrolled in the program.

The goals that were set will continue in place and for such reason there is no modification to the goals.

## 2-C: DESCRIBE SPECIFIC, DOCUMENTED ACCOMPLISHMENTS THAT SUPPORT AND FACILITATE THE ACHIEVEMENT AND ASSESSMENT OF STUDENT LEARNING OUTCOMES.

---

SLO #1: Students who utilize the services of the Child Development Center derive the educational benefit of being able to attend PVC courses while their children are looked after by child care professionals.

SLO #2: Students enrolled in PVC nursing and child development programs benefit from the learning experience of working and interacting with small children ages three to five years and developing lesson plans that are age-appropriate.

Assessment Methods: Effectiveness of the utilization of child care services by students enrolled in PVC courses; review of grades earned at PVC; coordination between parents and CHD director and parents.

Action Plan: For PVC students whose children are enrolled at the CHD, instructors, through daily, face-to-face communication, continue to keep them apprised of their child's growth and development.

*"I love this program, staff is friendly and work really well with the children"*

The Palo Verde College Child Development Program is required to complete an age-appropriate Desired Results Developmental Profile (DRDP) for each child who is enrolled in the program for at least ten hours per week (Copy of DRDP is attached). The Desired Result is completed for each child within sixty calendar days of enrollment and at least once every six months thereafter. Teachers and other staff they use the developmental profiles to plan and conduct age and developmentally appropriate activities. When children are transferred to a local, public school, parents are provided with information from the year(s) they attended preschool. All information provided deemed beneficial to the child and it might include, but not limited to, development issues, social interaction abilities, health background and diagnostic assessments, if any.

### 3-A: NEW GOALS

The Palo Verde College Child Development Center will continue working on the following goals with the hopes that by the next program review will be accomplished.

- GOAL 1: To work with leadership and the board to make a determination of whether the Palo Verde College must relocate the Palo Verde College Child Development Program or sign new lease agreement with the Unified School District.
  - As we approach the end of our lease agreement-
    - We need to secure a location to benefit present and future children's preschool education.
    - Work in conjunction with enrolled students and support their need for services.
- GOAL 2: Hire fully qualified staff to meet the needs of the children and the program. The program Lack of full-time staff – Student parents and other parents who utilize the services of the Child Development Center will benefit if the program hires fully qualified staff to meet their needs.
- GOAL 3: Purchase new tablets or updated computers for the preschool classrooms and for teacher and administrative office. By purchasing new tables, it will allow teachers the usage of new tools while teaching lessons throughout the school year; it will also allow students to learn about computers and new technology. New technology in the classrooms can help develop new skills essential for success in school and beyond.

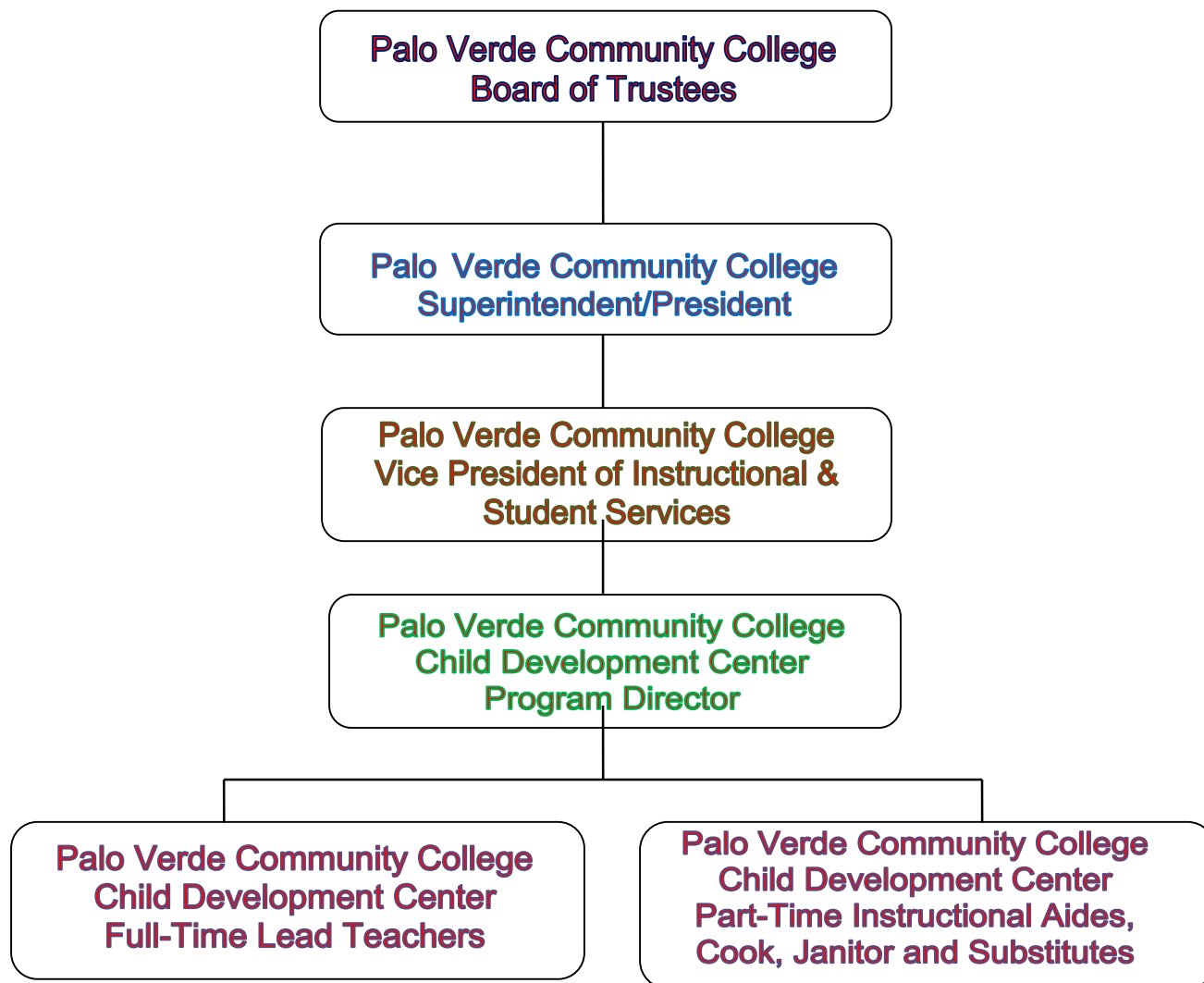


*"This Program has helped me succeed in school. I am very pleased with the program and staff."*

## 4-A: PERSONNEL SUMMARY

---

Organizational chart for the Palo Verde College Child Development Center



1. Palo Verde Community College Child Development Program Director: program Director is Responsible for establishing policies to run the preschool, for appointing the appropriate staff members to carry out the directives and for explaining the policies to parents; Creating and maintaining a budget is a major responsibility. This includes setting fees for children to participate in the preschool's programs. Making sure the preschool facilities are cleaned and maintained in accordance with state regulations; Oversee teaching staff and helps them with curriculum development; Hire support staff, such as janitor, aides and cook, to ensure the smooth operation of the facility; Meet with parents; give periodic evaluations of each child's progress, and deal with children having behavioral problems. The director must possess the leadership skills necessary to carry out the policies the State has established.

2. Palo Verde College Full-Time Teachers- organize and conduct program activities; participate in the selection, orientation, supervision of all instructional aides and volunteers; cooperate with program director in their evaluations; provide classroom management; implement instructional activities designed to foster children's progress in educational development and social growth; evaluate individual child development; participate in meetings and activities; make recommendations to the program director regarding the purchase of supplies, equipment and overall expenditures; perform other duties as assigned by the program director/supervisor.
3. Part-time Instructional Aides- assist in planning and delivery of instructional activities in relation to interest centers, arts and crafts, and project preparation; assist in classroom management and discipline, particularly in the needs of children, both indoors and out; help maintain circle time discipline;; tutor individual and small student groups; help supervise students activities; responsible for classroom in absence of regular teacher; participate in preschool workshops activities.
4. Cook- prepare daily meals for the program; plan menus according to applicable local and state regulations; supervise the serving and cleanup of food service activities; maintain food service records per prescribed local and state regulations; prepare food service reports; pick-up food supplies from vendors in the community.
5. Janitor/Grounds Keeper: Maintain building and grounds in safe and clean conditions.

#### 4-B: ARE CURRENT MANAGEMENT AND STAFF ADEQUATE TO PERFORM FUNCTIONS AND RESPONSIBILITIES SATISFACTORILY AND TO ACHIEVE PROGRAM GOALS? EXPLAIN

---

The Palo Verde College Child Development staff are fully qualified to meet all program requirements. The program counts with two-full time and 8 part-time staff members that are fully accredited and have many years of experience. The program director has successfully received her Master's Degree; the two-full time lead teachers have also accomplished many hours of education and have California Child Development Teacher's permits and all part-time instructional aides have a current and valid Child Development Permit.



*"Love the place for my Kids"*



#### 4-C: ORGANIZATIONAL CHANGES THAT WILL IMPROVE PROGRAM PERFORMANCE, PROVIDE TIMELINES FOR THE ACHIEVEMENT OF SUCH CHANGES, AND DESCRIBE MEASURES THAT WILL ASSESS THE EFFECTIVENESS OF SUCH CHANGES.

---

By hiring new full-time instructional aides the program, the children and lead teachers will benefit from having full-time permanent instructional aides and avoid the constant changes on personnel. Part-time aides are usually seeking other jobs (minimum wage and 19 hours per week is not enough to support their families). Due to the lack of full time staff- the program administrator and lead teachers have to take the time and train new part-time staff. The program has a substitute janitor that is fully qualified to do janitorial and grounds work. When his position came open, he was hired as a substitute and the program would benefit from hiring him as a permanent- part time janitor.

#### 5-A: STAFF DEVELOPMENT

---

The Palo Verde College Child Development Center staff attend various meetings regarding early childhood education. These trainings helps us identify new changes for the program, changes on the tools being used, such as a the DRDP, observations, the ECERS, etc.. Conferences as well as other professional development events help staff members with the information necessary to carry out their assigned duties. New conferences throughout the school year offers teachers ways to keep their classrooms and curriculum fresh, exciting and highly educational. By providing the opportunity to attend new trainings, conferences or meetings, teachers are able to not only continue with their education, they gain vital skills that they may not have been able to learn with taking college courses. For Palo Verde College Students and any parent with children enrolled in the program, it is very important that teachers continue their education so they can be prepared with new material, they must be able to help students in order for them to truly succeed.

#### 5-B: AREAS OF UNMET PROFESSIONAL DEVELOPMENT NEEDS AMONG PERSONNEL IN THIS PROGRAM

---

Majority of the trainings that are offered for The Palo Verde College Child Development Center staff are offered out of town and on the weekends. Staff chooses the trainings they want to attend depending on their needs. When staff do not have the desired to attend training out of town, they enrolled in college courses or take online trainings that are being offered through the California Department of Education, First 5 or Riverside County of Education. This trainings provide adequate training to meet professional development needs.

*"This program is a good environment and my child feels happy to come and interact with his friends and teachers."*

## 6-A: PROGRAM FACILITIES AND EQUIPMENT

The Palo Verde College Child Development Center has the adequate space to support the department.

- The program has dedicated space for all the staff and children in the program
- The program has two small offices that are fully equipped to support the needs of the staff and two classrooms that are fully equipped to meet the needs of the children.
- The backyard is equipped with playground equipment



*"This Program has made my son grow so much and the staff goes above and beyond any expectations. It is great!"*

## 6-A: ARE CURRENT FACILITIES, SUCH AS CLASSROOMS, OFFICES AND EQUIPMENT ADEQUATE TO SUPPORT THE PROGRAM? EXPLAIN

---

The Palo Verde College Child Development Program has sufficient equipment to meet the needs of the children and it is adequate to support the program.



*"This Program has helped my granddaughter in many ways, I will forever be grateful.... Thank you!"*

## 6-B: DESCRIBE PLANS FOR FUTURE CHANGES IN SUPPORT FACILITY OR EQUIPMENT

When funds become available, the program will purchase new tables and at least one more full time instructional aide. For now the program is adequately equipped to meet the needs of the parents and children enrolled in the program.

## 7-A: PROGRAM FINANCIAL RESOURCES

Expenses	FY 2013-2014 Actuals	FY 2013-2014 Budgeted	FY 2012-2013 Actuals	FY 2012-2013 Budgeted
Certified Salaries	\$ 67,680	\$ 71,990.00	\$ 64,452.00	\$ 64,452.00
Classified Salaries	\$166,131.00	\$ 171,973.00	\$166,692.00	\$ 157,027.00
Employee Benefits	\$ 86,289.00	\$ 86,289.00	\$ 80,986.00	\$ 105,648.00
Educational Supplies	\$23,757.00	\$ 32,823.00	\$ 21,396.00	\$ 47,683.00
Operating Expenses	\$18,025.00	\$ 19,828.00	\$16,114.00	\$ 17,307.00
Capital Outlay	\$ 84.00	\$2362.00	\$ 430.00	\$ 430.00
New Equipment	-0-	-0-	-0-	-0-
CDC Loan	-0-	-0-	-0-	-0-
Total Including Capital	\$361,966.00	\$ 385,265.00	\$ 350,070.00	\$ 392,547.00
<b>CDC CONTRACT FUNDS</b>				
Instructional Materials funds	-0-	-0-	-0-	-0-
Child Nutrition Program funds	\$38,253.00	\$ 32,795.00	\$ 35,331.00	\$ 32,795.00
Misc. income (other app. Capital Outlay)	\$8,993.00	\$8,500.00	\$ 10,218.00	\$ 13,500.00
Approved Budget	\$298,085.00	\$ 292,869.00	\$ 292,869.00	\$ 292,869.00
<b>TOTAL INCOME RECEIVED</b>	\$345,331.00	\$ 334,164.00	\$338,418.00	\$ 339,164.00

Expenses	FY 2011-2012 Actuals	FY 2011-2012 Budgeted
Certified Salaries	\$66,972.00	\$ 64,272.00
Classified Salaries	\$ 153,902.00	\$ 156,804.00
Employee Benefits	\$ 78,046.00	\$ 80,643.00
Educational Supplies	\$ 20, 945.00	\$ 39,100.00
Operating Expenses	\$13,756.00	\$ 17,150.00
Capital Outlay	\$ 2,997.00	\$ 3,000.00
New Equipment	-0-	-0-
CDC Loan	-0-	-0-
Total Including Capital	\$ 336,618.00	\$348,534.00
<b>CDC CONTRACT FUNDS</b>		
Instructional Materials funds	-0-	-0-
Child Nutrition Program funds	\$33,548.00	\$ 32,795.00
Misc. income (other app. Capital Outlay)	\$11,756.00	\$13,500.00
Approved Budget	\$316,654.00	\$323,915.00
<b>TOTAL INCOME RECEIVED</b>	\$361,958.00	\$370,180.00

## 7-B: DESCRIBE PLANS FOR FUTURE BUDGET CHANGES

---

The Palo Verde College Child Development Center does not anticipate future budget changes at this time. The Program is State Funded and unless the State makes changes, the funding will continue the same throughout the school years to come.

## 8-A: PROGRAM STRENGTHS

---

- The program provides reliable quality preschool services for parents that are working, attending school or can simply justify the need. (SLO#1)
- The students are introduced to a curriculum that prepares them for kindergarten.
  - The program follows a Creative Curriculum teaching children shapes, colors, letters, numbers, how to recognize and write their names and other thematic units throughout the school year ( Creative Curriculum schedule included)
- The program supports the community by offering the facility to students, community members, members and colleagues. (SLO#2)
  - All Licensed Vocational Nurses per school year (LVN Students) 3 days per week, 6 ½ per day.
  - Students who take Early Childhood Units
  - Students attending the Palo Verde College that need to do their practicum
  - Student workers which goal is to become teachers
  - Students attending Palo Verde High School and whose goal is to become teachers
  - People working as Early Childhood educators that have an obligation to contribute to the education of their students with needs of field experience.
- The program provides preschool services Monday through Friday between the hours of 7:30a.m.-5:30p.m.
- The program is open 247 days out of the year
- The program is a non-discriminatory program that provides services to children 2.9 years of age through 5 years old.
- The program provides nutritious meals (breakfast, lunch and snack) to all children enrolled in the program.



*"I am grateful for the communication with us about my child and helpful for her needs."*

## 8-B: PROGRAM WEAKNESSES

---

- Lack of full-time staff – The program does not have sufficient funds to have full-time staff and pay for their benefits and depends on mostly part-time aides that are usually seeking other jobs (minimum wage and 19 hours per week is not enough to support their families).
- Due to the lack of full time staff- the program administrator and lead teachers have to take the time and train new part-time staff and the use of funds for fingerprints and TB test is a burden on the budget.
- Lack of a permanent janitor to clean the classrooms and do other janitorial duties.
- The program is in need of parking lot repairs
- Lack of funds to attend more trainings throughout the school year

## 8-C: SOLUTIONS

---

- Seek for new grants to continue purchasing new playground equipment and make the repairs that are required in the classrooms.
- Seek for more free trainings for Program staff members
- Raise money through fundraisers to purchase equipment for the classroom.
- Seek possible future budget assistance



*"This program is very helpful in assisting me in completing my education. I know my child is safe here. Thank you!!"*

# P.V.C C.D.C CREATIVE CURRICULUM SCHEDULE

## PALO VERDE COLLEGE CHILD DEVELOPMENT CENTER

### Curriculum Schedule 2015-2016

Week of:	Theme	Topics	Shape/color/number/letter		L.P. due	TRIPS/COMMENTS
June 29-July 3	SUMMER SAFETY	make hats, glasses to protect from the sun	protect from the sun	INTRO TO	6/26/2015	TRIPS/COMMENTS July 3-Independence program closed
July 6-10	VACATION TIME	fishing	cube & cylinder	LETTERS	7/2/2015	program closed
July 13-17	SUMMER ACTIVITIES	camping/ traveling	summer fun	SHAPES	7/10/2015	WATER PLAY DAY
July 20-24	WATER SAFETY	water safety	summer fun	COLORS	7/17/2015	FRIDAYS ONLY
July 27-31	WATER SAFETY	the beach	summer fun	NUMBERS	7/24/2015	LESSON PLANS DUE EARLY
August 3-7	NEW BEGINNING	Free painting, drawing, etc.	Invite children to get familiar with a new environment, new rules, new friends & teachers. Give them the freedom to explore		7/31/2015	Summer school
August 10-14	NEW FRIENDS	welcome to school,			8/7/2015	
August 17-21	GETTING TO KNOW EACH OTHER	getting to know each other			8/14/2015	water play ends
August 24-28		classroom rules			8/21/2015	
Aug. 31- Sep. 4	ALL ABOUT ME	ALL ABOUT ME	star	Yellow	8/28/2015	CLOSED
Sept. 7-11	MY FAMILY/FRIENDS	My family and friends	star	Yellow	9/4/2015	SEPTEMBER 7(Labor day)
Sept. 14-18	MY SENSES	My senses	star	Yellow	9/11/2015	INTRO TO ZOOPLICATIONS
Sept. 21-25	MY SENSES	My senses	star	Yellow	9/18/2015	
Sept. 28- Oct. 2	AUTUM BEGINS	autumn colors	star	Yellow	9/25/2015	RRW=Red Ribbon Wk
Oct. 5-9	COMM. HELPERS	Policeman/911	Circle	Orange	10/2/2015	ambulance
Oct. 12-16	COMM. HELPERS	Fireman/fire safety	Circle	Orange	10/9/2015	fire truck, police cars
Oct. 19-23	RED RIBBON WEEK	Ambulance/RRW	Circle	Orange	10/16/2015	RRW- Oct 21
Oct. 26-30	HALLOWEEN/FALL	Halloween/Fall	Circle	Orange	10/23/2015	Halloween-Friday -31
Nov. 2-6	FARM & ZOO	Farm animals	Triangle	Brown	10/30/2015	Nov.1- daylight time ends
Nov. 9-13	ANIMALS	zoo animals	Triangle	Brown	11/6/2015	CLOSED
Nov. 16-20	THANKSGIVING	Thanksgiving	Triangle	Brown	11/13/2015	NOV. 11-Veteran's day
Nov. 23-27	FAMILY TRADITIONS	family and friends	review	review	11/20/2015	NOV. 26-27 Thanksgiving
Nov. 30-Dec. 4	MAKE	Nursery Rhymes	Rectangle	blue	11/25/2015	CLOSED-
Dec. 7-11	BELIEVE	fairy tales	Rectangle	blue	12/4/2015	Dec. 23-25-Christmas
Dec. 14-18	RHYMES	Make Believe	Rectangle	blue	12/11/2015	Dec. 30- Jan 1-New Years
Dec. 21-25	CHRISTMAS	Christmas	Rectangle	review	12/18/2015	Winter begins- Dec. 22
Dec. 28-Jan. 1	NEW YEAR	New Year	review	review	12/22/2015	

Week of:	Theme	Topics	Shape/color/number/letter	L.P. due	TRIPS/COMMENTS		
Jan.4-8	SEASON/WINTER	Winter colors & weather	square	white	review	12/28/2015	CLOSED-
Jan. 11-15	WINTER CHANGES	nature changes	square	white	M- #17-18	1/8/2016	Jan 1st-New Year
Jan. 18-22	ARTIC ANIMALS	Arctic animals	square	white	N- #19-20	1/15/2016	Jan 18- Martin Luther King
Jan. 25-29	DENTAL WEEK	our teeth/dentist	square	white	O- #17-20	1/22/2016	
Feb. 1-5	TRANSPORTATION	By Land	Heart	red/black	P- #21-22	1/29/2016	Valentine's Day
Feb. 8-12	VALENTINE'S DAY	Valentine's day	Heart	red/black	Q- #23-24	2/5/2016	Feb 14
Feb. 15-19	TRANSPORTATION	By water	Heart	red/black	R- #21-24	2/12/2016	CLOSED
Feb. 22-26	TRANSPORTATION	By Air	Heart	red/black	S- #21-24	2/19/2016	Feb. 15-President's Day
Feb.29-Mar. 4	DR. SEUSS B-DAY	Dr. Seuss B-day	oval	green	T- #25-26	2/26/2016	Dr. Seuss B-day-- 3/2
March 7-11	KITES	What makes wind	oval	green	U- #27-28	3/4/2016	St. Patrick's Day-- 3/17
March 14-18	ST. PATRICK'S DAY	St. Patrick's Day	oval	green	U- #25-28	3/11/2016	Daylight saving time-Mar 13
March 21-25	EASTER	new bugs, new bunnies	oval	green	V- #25-28	3/18/2016	Easter- March 27
Mar.28-Apr. 1	SPRING	new season, new flowers	oval	green	review	3/24/2016	CLOSED- March 25
April 4-8	FLYING INSECTS	flying insects	diamond	purple	W-#29-30	4/1/2016	
April 11-15	CRAWLING INSECTS	crawling insects	diamond	purple	X- #1-30	4/8/2016	
April 18-22	BIRDS	different birds	diamond	purple	Y-#1-30	4/15/2016	
April 25-29	WIND/RAIN	wind/rain	diamond	purple	Z - #1-30	4/22/2016	
May 2-6	MOTHER'S DAY	Mother's Day	octagon	pink/gray	REVIEW	4/29/2016	5 de Mayo
May 9-13	REPTILES & AMPHIBIANS	reptiles & amphibians	octagon	pink/gray	letters and numbers	5/6/2016	Mother's Day - 5/8
May 16-20	DINOSAURS	Dinosaurs	octagon	pink/gray	#1- 30	5/13/2016	CLOSED May 30
May 23-27	OPPOSITES	Opposites	octagon	pink/gray	review	5/20/2016	GRADUATION DAY
May 30-Jun. 3	TRANSITION	Transitions	sphere	review	REVIEW	5/27/2016	FATHER'S DAY-
June 6-10	JUNGLE ANIMALS	Jungle Animals	and	colors	LETTERS	6/3/2016	June 19, 2015
June 13-17	FATHER'S DAY	Father's Day	cone	numbers	COLORS	6/10/2016	summer begins - June 20
June 20-24	OCEAN ANIMALS	fish/octopus, etc.		Letters	&	6/17/2016	
June 27- July 1	SUMMER SAFETY	make hats, glasses to	protect from the sun		NUMBERS	6/24/2016	