

MESSAGE IN A BOTTLE

Palo Verde College

Important Dates:

2nd- Last Day to Register & Last Day for Enrollment Fee Refund

9th-Last Day to Withdraw without "W" on Permanent Record

14th- Valentine's Day

16th- Lincoln Day, Campus CLOSED

19th- Washington Day, Campus CLOSED

27th-National University will be on campus CL building 11am to 1pm

28th- Last Day to Elect P/NP Grading Option

Inside this Issue:

The Origin of Black History Month	1
History of Valentine's Day	2
ASG Welcome Back Event	3
The Pirates of Penzance	4
Blood Drive	5

The Origin of Black History Month

The story of Black History Month begins during the summer of 1915 in Chicago, Illinois. Carter G. Woodson went to Washington, D.C. to participate in a national celebration of the 15th anniversary of emancipation. Thousands of African Americans traveled from far and wide to witness the exhibits that showed just how far their people had come since slavery was abolished.

Woodson, inspired by this celebration decided to start an organization dedicated to promoting the scientific study of black life and history.

Later that year, Woodson met with A.L. Jackson and three others and they formed the Association for Study of Negro Life and History (ASNLH).

In 1924, college friends of Woodson created Negro History and Literature Week, later renamed Negro Achievement Week. In 1926, Woodson released a statement announcing Negro history week to be held in February. He built Negro History Week around traditional days of commemorating the black past.

The 1960s had a very dramatic effect on the study and celebration of black history. By the end of the decade, even before Woodson's death in April of 1950, Negro History Week was well on its way to becoming Black History Month.

It's commonly believed that Woodson chose February to include the birthdays of two Americans who were heavily involved in shaping black history, Abraham Lincoln and Frederick Douglass.

"Love is the only force capable of transforming an enemy into a friend" – Martin Luther King Jr.



The History of Valentine's Day

The origins of Valentine's day go all the way back to ancient Rome, with a festival held in mid-February called Lupercalia. In honor of Saint Valentine, the Christian church had chosen to have Valentine's day celebrated in mid-February. Historians are unsure which St. Valentine

the holiday is was made to honor, as there was more than one St. Valentine during this time. At the end of the 5th century, Pope Gelasius had declared February 14th as the official Valentine's day. Not until the 1300's was Valentine's associated with love and romance. The first written

valentine greetings appeared in the 15th century & in the 17th century it became a tradition of exchanging Valentine's day cards and letters. Valentine's Day soon caught on in the US and today it is estimated 1 billion Valentine cards are sent every year.



ASG Welcome Back Event

Palo Verde College's ASG held their annual welcome back event on January 30th from 10 AM to 2 PM. All students were welcome to drop by the student activities center and enjoy free food and activities.

Good luck with your spring classes PVC Students. Remember if you need a place to study or just hang out feel free to visit the Student Ac-



The Pirates of Penzance

The Palo Verde College Choir in association with Rotary Club of Blythe will be putting on a play called Pirates of Penzance. The event will be held on Wednesday, February 7th in the PVC "Ted Arneson" Theater. Tickets are \$10.00, Reception starts at 6:45 PM & Performance starts at 7:30 PM. Make sure to support the PVC Choir.



Blood Drive

Blood drive will be held Thursday, February 15 from 10 AM to 3 PM in CS 123/124. Please be sure to drink plenty of fluids, eat a healthy meal and get a good night's rest prior to donating. One donation can help save as many as 3 people's lives! You can schedule a donation time, by signing up in the ASG room. (CS 133) For any more information, please visit www.lstream.org.



PALO VERDE COLLEGE

Associated Student Government



Jasmine Gima
President



Alessandra Carrillo
Vice President



Maria Lind
Secretary



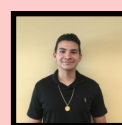
Melissa Farmer
Business Manager



Sunil Lal
Student Trustee



Gregorio Mendez
Historian



Jesse Rangel
Commissioner of Publicity



Staci Lee
Advisor

ASG meetings are held every Tuesday @ 11:00 in the Student Activities Center all students are welcome to attend.

Address: Palo Verde College *One College Drive* Blythe, CA 92225* Room CS133

Phone: (760)-921-5519

Fax: (760)-921-3608

Email: staci.lee@paloverde.com

www.paloverde.edu