

# Message in a Bottle

Associated Student Government Newsletter

November 1, 2016 Issue 3

In this Issue:

Message from Student Government	1
Fall Basket Drawing	1
ASG card for sale	2
Diabetes awareness month	2
Thanksgiving Day Facts	2

## Blythe's Got Talent BGT

**Saturday  
November 19<sup>th</sup>, 2016**  
Show to begin at **6:00 p.m.**  
*Palo Verde College Theater*

Tickets will be available at  
The Blythe Area Chamber of Commerce, or in the  
Student Activities Center at Palo Verde College

**Cost:** ticket \$15.00 each or \$20.00 at the door

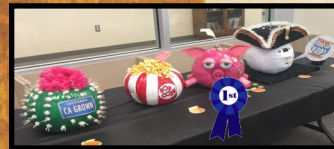
Questions: please call Staci Lee at (760)921-5512

## Message from Student Government

College Kick-off Day at Palo Verde High



## Pumpkin Contest



## ASG Officers 2016



ASG held their annual Halloween event "The Lockdown" on October 31st. The winner of the Costume Contest was Student Services, the department that won the Pumpkin Contest was Financial Aid, the winner of the Department Decorating Contest was DSPS, and the winners of the candy corn guess was Cesar Lozoya.

Each year this events continues to outshine the year before. What great student team work it takes put together this event each year for the students and campus community. Fun had by all including the Child Development Center pre-school students who visited the main campus to trick-or-treat through the offices.

## ASG Fall Basket Drawing

ASG will be raffling off a Fall Basket full of seasonal themed goodies. Make sure to buy a raffle ticket to enter a chance to win. Tickets are \$1.00 for one ticket or 6 tickets for \$5.00.

Drawing will be November 15 at 12:00 noon in the Student Activities Center!



## Important Dates:

### November

1-18- ASG canned Foods Drive

1,8,15,22,29 ASG meeting at 11 in the SAC

3- Centennial Event in theater

3 -UC Application/tag

4- PVHS Homecoming

8- Election Day

10 -Personal statement

11- Veteran's Day

15- ASG Basket Drawing

17 -Applying to the University/ CSU,UC, Independent, ETC.

18 -Last day to withdraw without penalty

19-Blythe's Got Talent

24- Thanksgiving Day/  
Campus closed 24th &25th



# AUTUMN

## 5 MUST KNOW FACTS ABOUT TYPE 1

# DIABETES

Type 1 diabetes is not only diagnosed in childhood. It can be diagnosed at any age.

Excessive thirst and urination are among the most common symptoms of Type 1 diabetes.



Type 1 diabetes is an autoimmune disease. It is not caused by eating too much sugar or obesity.

There is no cure for Type 1 diabetes. People with Type 1 diabetes cannot survive without injected insulin.

With the proper care and education, people with diabetes can do anything and everything!

Copyright Diabetes Media Foundation 2015 All Rights Reserved

## ASG Cards For Sale

Do YOU want access to the Student Activities Center? Do YOU want killer discounts all around town? Then YOU need to buy an ASG Card! They're \$10 for one full semester or \$18 for one school year. Here's how you can get one:

1. Go to the Business Office
2. Ask to buy an ASG card
3. Buy the ASG card
4. Make sure you have your student ID number
5. Take receipt to Student Activities Office where one of the lovely ASG Officers will issue you an ASG card.
6. Get access to all the awesome perks of being an ASG Card holder!

## Thanksgiving Day Facts :

- The first Thanksgiving Day feast was held in 1621 between the Plymouth colonists and the Wampanoag Indians.
- In 1863, in the midst of the Civil War, President Abraham Lincoln proclaimed a national Thanksgiving Day to be held each November.
- President Franklin D. Roosevelt established the fourth Thursday in November as the official Thanksgiving Day in 1941.
- According to the US Government Census, in 2014, 242 million turkeys were raised in the United States.

*Credit to: <http://www.wincalendar.com/Thanksgiving-day>*

## MECha De PVC

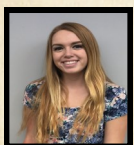
Dia de los Muertos Celebration and Festivities held by the PVC MECha Club took place at Palo Verde College on Oct. 28th.. A candle altar was displayed in remembrance of our loved ones who passed, music was enjoyed, along with food and refreshments. Thank you for supporting the MECha Club.



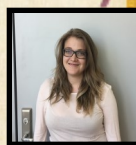
## Associated Student Government



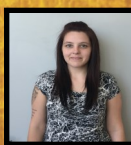
Jasmine Gima  
President



Nicole Salazar  
Vice President



Britny Bunch  
Secretary



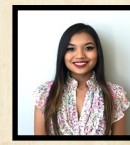
Melissa Armer  
Business Manager



Sunil Lal  
Student Trustee



Emili Tom  
Historian



Maria Bugtai  
Commissioner of Publicity



Staci Lee  
Advisor

**Address:** Palo Verde College \* One College Drive \* Blythe, CA 92225 \* Room

**Contact Information:** Tel: (760) 921-5519 \* Fax: (760) 921-3608 \* E-mail:

Staci.Lee@paloverde.edu

**Website:** [www.paloverde.edu](http://www.paloverde.edu)