

MESSAGE IN A BOTTLE

Associated Student Government Newsletter

October 1, 2016

Issue 2

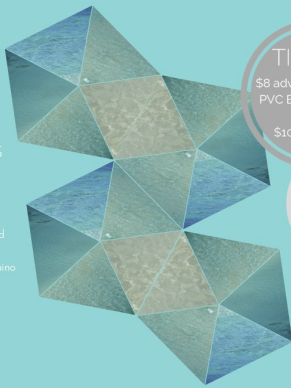
PVC Fall 2016 Production

SHORT CIRCUIT

A collection of brief plays by John Augustine, Wendy MacLeod and John Wooten
DIRECTED BY SIOUX STOECKLE

FEATURING

Charles Biberg
Emily Biberg
Daniel Burton
Anthony Crawford
Julio Garrico
Irma Gonzalez-Dagnino
Julene Marquez
Noelle McMillin
Diego Ortiz
Jaclyn Randall
Juliette Singler
Brian Thieboux



TICKETS

\$8 advance purchase
PVC Business Office
\$10 at the door

PVC students with
ASG Card
are admitted free

OCTOBER 21 & 22 | 7:00 PM
PVC Theater

Adult language and content for mature audiences
Information: 760.921.5433

Presented by Palo Verde College

Bullying Awareness

National Bullying Prevention Month is a campaign that started in 2006, originally it was only celebrated for the first week in October but later expanded to the entire month in 2010. PACER developed the initial campaign, National Bullying Prevention and Awareness Week, to raise awareness about bullying. Historically, bullying had been viewed as “a childhood rite of passage” that “made kids tougher,” but the reality has always been that bullying can leave devastating and often long-term effects such as a loss of self-esteem, increased anxiety, and depression for those involved. PACER reached out to the community through partnerships with education-based organizations such as the National PTA, the American Federation of Teachers and the National Education Association to provide schools, parents and students with the educational resources and support to better respond to bullying behavior. The National Bullying Prevention Center laid the groundwork so that National Bullying Prevention Month is now a nationwide call to action around educating communities as to their roles in bullying prevention. This initiative has helped shift thinking away from bullying as “rite of passage” and toward the knowledge that bullying can be prevented and stopped through education and awareness.

Credit given to:
<http://www.pacer.org/bullying/nbpm/history.asp>

Message from our Student Government

Previous Events



W.O.W

Week of welcome!



PVC Foundation Lap top drawing!



In Honor of 9/11

*Thank you to everyone who participated in the events and were able to enjoy the Student Activities Center in September.
Respectfully,
Your ASG Officers*

In this Issue:

Bullying Awareness	1
Upcoming Events	1
Message from our Student Government	1
Miss Blythe	2
Breast Cancer Awareness	2
Halloween Lockdown	2
PVC T-shirts for sale	2



Upcoming Events: October

- 1-Miss Blythe Pageant
- 4-National University 10am-2pm
- 4, 11, 18, 25 -ASG Meeting 11 AM
- 11-UC Santa Barbara 10am-2pm
- 13-What is transfer?
Can I transfer?
- 14-Institute Day: No Classes
- 15- BGT Auditions CL 101 10am
- 20-California State University (UC) application workshop
Dual Admission Process (DAP)
- 21&22 -Short Circuit
- 21-23 -St. Joan of Arc Bazaar
- 31- Halloween Lockdown





October is Bullying Awareness Month



Miss Blythe Pageant



The Miss Blythe Organization will be hosting their annual Miss Blythe Pageant on Saturday, October 1st at 5:30pm Good luck to Anna Phipps, Jasmine Gima, Lauren Rizzoto, Zaynah Burton, Savannah Selph, Victoria Mallet, and Corinne Abernathy who will all be competing for the 2017 title and an opportunity to compete at Miss California.

The Miss Blythe Organization does a fantastic job of showcasing these girls talent's and we are excited to see how amazing they are. Of course, we will be sad to see Brianne go as our previous Miss Blythe. Also, Palo Verde College ASG will be selling candies and water at intermission funds raised will go toward future student events here at Palo Verde College.

Good Luck Contestants!

T-shirts for Sale



Attention Palo Verde Community College staff and students! Associated Student Government has posted a T-shirt Booster fundraiser on our Facebook page and PVC web page. T-shirts may be purchased directly through the internet. Proceeds will go toward future ASG events and Scholarships. T-shirts cost \$20.00 and will be shipped directly to you when the campaign closes. Thank you ahead of time for supporting Palo Verde College ASG. This is an opportunity to purchase children's T-shirts.

Halloween Lockdown

Associated Student Government will be having its annual Halloween Lockdown October 31st. This is always a very fun event that brings together the staff, faculty, and students. As always we will have our jail cell set up in the student activities center where you can purchase a warrant for anyone's arrest (if person is willing to participate) Where they can be locked up from 5 to 30 minutes. So if your professor or one of your classmates has been giving you a hard time, make sure to buy an arrest warrant and have them arrested at our Halloween lockdown. Remember to wear your costume for the costume contest. Happy Hauntings!!!

Breast Cancer Awareness Month

1. Nearly 200,000 Americans are diagnosed with breast cancer annually. Yet according to the Centers for Disease Control and Prevention there are roughly 2.5 million breast cancer survivors in the United States
2. Though risk of breast cancer may increase with having a family member who has had the disease, 80% of those diagnosed with breast cancer have no previous family history of the disease.
3. Being overweight and drinking more than one alcoholic beverage a day can increase the risk of breast cancer.
4. Physical activity can negate the side effects of cancer treatments, and prolong remission from breast cancer.

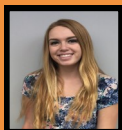
Credit given to:

http://www.nj.com/health/fitness/index.ssf/2012/10/october_is_breast_cancer_awareness_month_-

ASSOCIATED STUDENT GOVERNMENT



Jasmine Gima
President



Nicole Salazar
Vice President



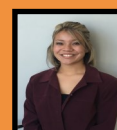
Britny Bunch
Secretary



Melissa Armer
Business Manager



Sunil Lal
Student Trustee



Emili Tom
Historian



Maria Bugtai
Commissioner of Publicity



Staci Lee
Advisor



Address: Palo Verde College * One College Drive * Blythe, CA 92225 * Room CS133



Contact Information: Tel: (760) 921-5519 * Fax: (760) 921-3608 * E-mail: staci.lee@paloverde.edu

Website: www.paloverde.edu