

MESSAGE IN A BOTTLE

Associated Student Government Newsletter

September 1, 2016 Issue 1

Miss Blythe



On the road to Miss America

Miss Blythe rehearsals are taking place the month of September in the Palo Verde college Theater with the show scheduled for 6:00pm on October 1, 2016. Support the Miss Blythe contestants by purchasing your ticket early! ASG will be selling snacks and waters during intermission. The funds raised by ASG will go toward scholarships and student activities.

The New ASG Officers 2016-2017



Purchase your ASG Card if you want to receive discounts at all of your favorite local businesses, receive students discounts at several locations out of town, and check out the equipment in the Student Activities Center. You may purchase an ASG card in the Business Office (CS120). The cost is \$10.00 for one semester, \$18.00 for one year after purchase bring your receipt to the Student Activities Center to receive your card. Make sure you know your student ID# and are ready for a picture.

Welcome Back from the Palo Verde College President



I would like to take this opportunity to welcome all of our first-time and continuing students. I applaud you for continuing your education at Palo Verde College. Whether you are looking to gain skills for a good paying job or you plan to transfer to a four-year institution, PVC is a great choice for you. Our career and technical programs can prepare you for a good paying job in many fields, such as, agriculture, computer information systems, nursing, automotive technology, and welding to name a few. And, our Associate Degrees for Transfer can provide you with a guaranteed path to entry into one of the California State Universities. I invite you to look through our 2016-17 catalog to see which programs work best for you. And, please know that all of our staff, faculty, and counselors are ready to answer your questions and to provide advice and counseling to help you make great choices for your future. I am proud to be your President and I look forward to seeing you around campus this year.

To your success!

Donald G. Wallace, Ph.D.
Superintendent/President
Palo Verde College



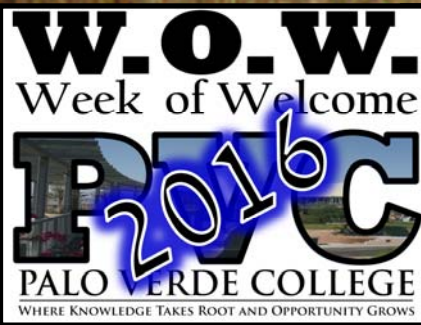
In this Issue:

Miss Blythe	1
Welcome back message from our President	1
Upcoming events	1
New ASG officers	1
Welcome back message from our Vice President of Instruction and Student Services	2
Lashawn Jamison fundraiser	2
Tips to stay on track	2

Upcoming Events: September September is Hispanic Heritage Month

- 1st -Labor day **CAMPUS CLOSED**
- 6th- **ASG Meeting canceled**
- 13th- National University will be visiting 10am-2pm
- 15th- Constitution Day/
Voter Reg. day 
- 19th- International Talk like a Pirate Day
- 28th- CSU San Bernardino- 10 a.m.-3p.m.

**Every Tuesday
11:00 am CS 133
ASG Meetings all
students are welcome**



Lashawn Jamison Flag Football Fundraiser Tournament



Thank you to everyone that helped us out with the Flag Football Fundraiser Tournament to honor Lashawn Jamison! The event had such a great turnout and we raised \$2,600 for Lashawn's family. Our condolences go out to Lashawn's close friends and family, he will be missed.



Welcome Back Message from Vice President of Instruction and Student Services



It's my favorite time of the year! There is nothing like the hustle and bustle of students signing up for those last minute classes, new friendships forming, former classmates reconnecting, and faculty and staff scrambling to make sure everything is in place for the semester ahead.

On behalf of Instruction and Student Services, I welcome you! Whether you are new to Palo Verde College, or old friends, we are here to assist you. Your success is our success, so let us know how we might best support you as you work towards achieving your educational goals.

We already believe in you, so believe in yourself – you can do this!

Wishing you a great semester,

*Dr. Sean C. Hancock
Vice President of Instruction and Student Services*

Tips to stay on track:

1. Create a strong academic foundation
2. Stay focused on your goals
3. Attendance is Key
4. Eat, Sleep, Move
5. Ask for help
6. Stay involved
7. Limit screen time
8. Create homework space
9. Stay organized
10. Be prepared
11. Plan ahead
12. Create new challenges
13. Acknowledge your accomplishments

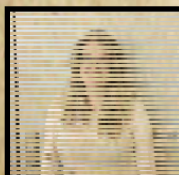
Good luck to everyone this year. Remember ASG is also here to help with any questions you may have. Don't hesitate to stop by the Activities Center!



Jasmine Gima
President



Nicole Salazar
Vice President



Britny Bunch
Secretary



Melissa Armer
Business Manager



Sunil LaL
Student Trustee



Emili Tom
Historian



Maria Bugtai
Commissioner
of Publicity



Staci Lee
Advisor



Address: Palo Verde College * One College Drive * Blythe, CA 92225 * Room CS133



Contact Information: Tel: (760) 921-5519 * Fax: (760) 921-3608 * E-mail: staci.lee@paloverde.edu

Website: www.paloverde.edu