



Enter Your Next Chapter

**ENROLL NOW AT
PALO VERDE COLLEGE**

CLASS SCHEDULE

Fall 2019

CLASSES BEGIN

AUGUST 12, 2019

MORE INFO
www.paloverde.edu
(760) 921-5500

ADDRESS
1 COLLEGE DRIVE
BLYTHE, CA 92225



TABLE OF CONTENTS

Message from the Superintendent/President	3
About Palo Verde College	4
Important Dates - Fall 2019	5
Eligibility and Residency	6
Non-Discrimination Policy	7
Student Success and Support Program	8
Support Services	9
General Information	10-11
Student Fees	12
Apply and Register	13
Academic Calendar Fall 2019	14
Methods of Instruction	15
Schedule of Classes	16-35
Non-Credit Classes—Blythe & Needles Campus	36-37
Schedule Planning Sheet	38
Schedule Planning Notes	39

ABOUT THIS SCHEDULE OF CLASSES

This schedule of classes is intended to help you register for classes for the 2019 Fall semester at Palo Verde College. Every reasonable effort has been made to determine that everything stated in this schedule is accurate. Because this publication must be prepared well in advance of the period of time it covers, changes are inevitable. **For the most up-to-date schedule of classes please visit us online at www.paloverde.edu and click on the link “PVC SERVICES”.** Course descriptions, programs, graduation requirements, and other important information are contained in the college catalog, which can also be found online at www.paloverde.edu.

Unless specifically exempted by statute, every course offered and maintained by Palo Verde College is open to any person who has been formally admitted to the College and who meets the course prerequisites as may be established under Title V of the California Administrative Code.



MESSAGE FROM THE SUPERINTENDENT/PRESIDENT



Welcome to Palo Verde College!

Your decision to pursue a college education is among the most important decisions you will make in your lifetime. It has been said that knowledge is power, and community college is the door through which many people have discovered the power to become more successful in life. According to research,

people with a college degree have a much better chance of finding a job as compared to those who do not have a degree, and workers with a college degree will earn over a million dollars more in their career than those who do not have a college degree.

Your decision to make Palo Verde College the next step on your educational journey is an excellent one. Many successful people have made the same choice you are about to make and started their educational journey at

a community college including Walt Disney, Halle Berry, Jackie Robinson, Jenni Rivera, Governor Arnold Schwarzenegger, and U.S. Representative to the United Nations, Gaddi Vasquez to name a few.

Palo Verde College can help you to achieve your educational goals whether you want to get a good paying job immediately after college, or you want to continue on with your education toward more advanced degrees. As a fully accredited institution, our transfer courses are accepted at CSU and UC system sites and your two year degree or certificate of completion is highly regarded in our community, surrounding areas, and throughout the State.

I congratulate you on your decision to attend Palo Verde College. Please take a few moments to review the college catalog and learn about the programs and services available to you here at Palo Verde College. Our outstanding instructors, counselors, and support staff are all available to help make your college experience successful and rewarding. We look forward to seeing you on campus, and thank you for becoming a member of the Palo Verde Community College family!

Donald G. Wallace, Ph.D.
Superintendent/President

ACCREDITATION

Palo Verde College is accredited by the Accreditation Commission for Community and Junior Colleges of the Western Association of Schools and Colleges, 10 Commercial Blvd., Suite 204, Novato, CA 94949, 415.506.0234, an institutional accrediting body recognized by the Commission on Recognition of Postsecondary Accreditation and the U.S. Department of Education.

OUR MISSION

Palo Verde College provides opportunities for personal and professional growth to a diverse and unique community of learners in an academic environment committed to student success and equity by supporting student achievement of basic skills, certificate, degree, university transfer, and career goals.

BOARD OF TRUSTEES

The Palo Verde Community College District Board of Trustees is composed of seven members elected to serve four year terms. Five of the trustees are elected at large from the part of the District in Riverside County. Two of the trustees are elected at large from the part of the District in San Bernardino County. The terms of trustees are staggered with elections in even numbered years. In addition, there is a Student Trustee who is elected by the District’s students.

The Board of Trustees has responsibility for setting policy, overseeing fiscal stability, and establishing an effective educational program for the students and the community.

The Board’s business meeting is scheduled for the 2nd Tuesday of the month, unless a national holiday conflicts with the meeting date, or if the Board of Trustees elects to change the date. The 4th meeting of each month is scheduled as needed for a Study Session.

George Thomas	_____	President
Brad Arneson	_____	Vice President
Stella Camargo– Styers	_____	Clerk of the Board
Edmundo Gonzales	_____	Trustee
Angel Ramirez	_____	Trustee
Dave Renquest	_____	Trustee
Sunil Lal	_____	Student Trustee



IMPORTANT DATES ~~~~FALL 2019

PALO VERDE COLLEGE 2019-2020 ACADEMIC YEAR

Fall 2019 – Calendar

Open	Online Orientation
Open	*Assessment Testing & Orientation ➤ Monday – Thursday 10:00 am – 3:00 pm
April 29—May 3, 2019	EOPS, DSPS, Veteran's & Foster Youth Priority Registration
May 04 – May 09, 2019.....	New & Continuing student Priority Registration – New students that have completed orientation, counseling, and educational plans & continuing students in good academic standing with fewer than 100 units.
May 10—August 23, 2019.....	*Open Registration
August 01, 2019	Last day to petition for Special Admissions (8 th – 10 grade)
August 06, 2019	*Needles New Student Orientation, 1:00 p.m.
August 06, 2019	New Student Orientation, 10:00 a.m. – Main Campus
August 08, 2019	New Student Orientation, 5:30 p.m. – Main Campus
August 12, 2019	Classes Begin
August 14, 2019	CalWORKs Orientation, 10:00 a.m. – 11:00 a.m.
August 18, 2019	Last Day to Petition Co/Prerequisite Challenge Form
August 21, 2019	*Needles Orientation, Make-Up, 4:00 p.m.
August 23, 2019	Last Day to Register
August 23, 2019	Last Day to Apply for a Refund
August 26, 2019	Make-up New Student Orientation, 5:30 p.m. – Main Campus
August 30, 2019	Last Day to Withdraw without “W” Showing on Permanent Record
September 02, 2019.....	Labor Day Holiday – Campus Closed
September 24, 2019.....	Last Day to Elect P/NP
October 11, 2019.....	Institute Day, no classes
November 11, 2019.....	Veteran's Day – Campus Closed
November 15, 2019.....	Last Day to Withdraw from any Course Without Penalty (“W” will show on permanent record)
November 28-29, 2019.....	Thanksgiving Break – Campus Closed
December 09-13, 2019	Finals Week
December 13, 2019.....	Last Day of Classes

Assessment Testing and Orientation are **mandatory for New Students*

Assessment Testing and Orientation are **mandatory for New Students - Please allow two hours to complete the Assessment Test—
Dates & Times subject to change.*



ELIGIBILITY AND RESIDENCY

WHO MAY ATTEND/ELIGIBILITY

Admission to Palo Verde College is open to anyone who is a high school graduate, who possesses a GED certificate, or who holds a High School Equivalency Certificate. Those who are not high school graduates or do not have one of the equivalencies but are eighteen (18) years of age and show evidence of being able to benefit from instruction may attend the college. High school students in the 11th and 12th grades, with the recommendation of their high school counselor, may attend. Those students below 11th grade may attend if they have parental consent, approval from the counselor or school principal, the petitions committee, and the college governing board. Enrollment in some courses will be limited (some examples: classes are full, limitations due to available equipment, or safety regulations). See college catalog for college approval process.

NEW VS. RETURNING VS. CONTINUING

New Students

You are a new student if you have never filed an application nor enrolled in courses offered by Palo Verde College.

Returning Students

You are a returning student if you have previously filed an application and attended Palo Verde College but have been away for two (2) regular semesters or more.

Continuing Students

You are a continuing student if you were registered and attended Palo Verde College during the 2019 Spring Semester.

RESIDENCY

Palo Verde College defines a resident as a person who intends to make California his or her permanent home and has resided within the State for one year prior to the residency determination date, which is one day prior to the first day of classes of each semester or summer session. The requirements necessary to demonstrate intent to become a California resident are available from the Admissions and Records Office.

Please note: If you hold a non-immigrant visa or a permanent visa, and/or if you have applied for amnesty, you will need to bring your passport visa and/or I-688 form to the Admissions and Records Office at the time you apply.

Undocumented Students

If you are a new or returning student and undocumented, you may be considered a non-resident for tuition purposes. There are, however, no limitations in your enrollment.

Foreign Students

Foreign students (those attending on F-1 visas) are considered non-residents. If you are a foreign student and have completed the equivalent of an American high school education with satisfactory grades, you may be admitted to Palo Verde College, however, certain restrictions apply. Please consult the college catalog or counselors for details concerning applications and registration.

Military Students

Military personnel and their dependents are considered residents during the first year in which active duty began in California, but they must establish residency thereafter.

Reclassification to Resident Status

Students who have been classified as non-residents are not automatically reclassified as residents. Reclassification to resident status must be initiated by the student. Students interested in changing their classification should consult and submit a reclassification petition with the Admissions and Records Office prior to end of the current semester for residency status to become effective the coming semester.

The petition must be accompanied by documentation which verifies the student's interest to become a California resident, evidence of physical presence in California for at least one year prior to the coming semester's start date, and evidence of financial independence. The law clearly states the burden of proof for proving residence rests with the student.

NON-DISCRIMINATION POLICY

POLIZA NO-DISCRIMINATORIA

Gender

Palo Verde College does not discriminate in the educational programs, or activities on the basis of sex. Title IX of the Educational Amendments of 1972, as amended, and the administrative regulations adopted there under, prohibit discrimination.





NON-DISCRIMINATION POLICY

Género Femenino o Masculino

El Colegio de Palo Verde no discrimina en los programas educativos, ni en las actividades por el Género. Título IX de las enmiendas educativas de 1972, como enmendado, y las regulaciones administrativas adoptadas prohíbe la discriminación.

Disabled

Palo Verde College does not discriminate on the basis of disability and is in compliance with Section 504 of the Rehabilitation Act of 1973, as amended, and the regulations adopted there under. More specifically, Palo Verde College does not discriminate in admission or access to, or treatment, or employment in its programs and activities.

Estudiantes Incapacitados

El Colegio de Palo Verde no discrimina por la incapacidad y está en conformidad con la Sección 504 del Acto de Rehabilitación de 1973, como enmendado, y las regulaciones adoptadas. Más específicamente, el Colegio de Palo Verde no discrimina en la admisión o acceso a, ni al tratamiento, ni el empleo en sus programas y actividades.

Age, Race, Color, or National Origin

Palo Verde College complies with the requirements of Title VI of the Civil Rights Act of 1964 and the regulations adopted there under. No person shall, on the grounds of age, race, color, or national origin, be excluded from participation in, be denied the benefits of, or be otherwise subjected to discrimination under any Palo Verde College program.

Edad, Raza, Color o Nacionalidad

El Colegio de Palo Verde cumple con los requisitos del Título VI del Acto Civil de Derechos de 1964 y las regulaciones adoptadas. Ninguna persona será excluida o le será negada la participación, o será sujeta a la discriminación bajo cualquier programa de Colegio de Palo Verde, por motivo de la edad, raza, color, u origen nacional.

Limited English Proficiency

Limited English proficiency is not a barrier to participation in College courses and/or programs. During normal working hours, bilingual staff is available in Student Services.

Any person who feels discriminated against should contact the Chief Human Resources Officer, Cecilia Garcia, who serves as the Palo Verde College Affirmative Action Officer. She can be reached in the Business Services office in the College Services Building or by calling (760) 921-5478.

Dominio Limitado del Inglés

El dominio limitado del inglés no es una barrera a la participación en cursos y/o programas colegiales. Durante horas normales de trabajo, el personal bilingüe está disponible en el departamento de servicios para estudiantes.

Cualquier persona que se sienta discriminada debe contactar a la Ejecutiva Oficial de Recursos Humanos, Cecilia Garcia, en función oficial de Acción Afirmativa del Colegio Palo Verde. Favor de comunicarse a la oficina de servicios administrativos en el edificio de servicios colegiales o llamar al (760) 921-5478.

MATRICULATION

Admissions (CCCApply)

For new students, the first step is applying for admission to Palo Verde College. Students will be asked to provide the college with information about themselves so the staff can provide them with the types of services needed to help them achieve their goals and objectives. Some of this information is required by federal or state law, or college policies. Other information will assist the college in determining whether the student needs to be referred to orientation and assessment programs. It is important to submit copies of high school transcripts and transcripts of any previous college work at the time of admission.



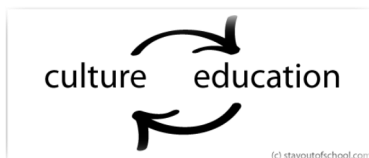


STUDENT SUCCESS AND SUPPORT PROGRAM

Orientation (Online or Face-to-Face)

The orientation workshop, with a presentation by a member of the college staff, will give the student important information regarding the services, programs and courses available through the college. At this time, a counselor will explain the assessment program and will answer questions regarding assessment. Orientation sessions are scheduled periodically throughout each year. A schedule of orientations is available in Student Services. Online Orientation is also available.

Orientation for new students is required prior to registration. Returning students are also encouraged to attend an orientation.



Assessment

To help the students determine their skill levels in many academic areas, including written English expression, reading, and mathematics, the college provides a comprehensive assessment program. Assessment scores assist the students and counselors to determine the appropriate courses for students to enroll in during the first semester. Placement in English or math courses are contingent upon having completed assessments.

Advisement

A counselor will review with you your assessment results along with your previous academic history and education goals. The counselor will assist you in developing an educational plan and scheduling classes which meet your specific needs.

Registration (ONLINE)

Once you have completed assessment, advisement, and orientation, you may register for your courses at the appropriate time. Don't get stopped at registration. Be sure to complete your process. Students should make an appointment with a counselor to plan their courses and register for courses in Student Services according to the Registration Schedule.

Valoración, consejo y orientación

Valoración, Consejo y Orientación son los componentes mandatorios del estado para el programa de matriculación. Es un diseño preparado para darle mejor oportunidad para que tenga buen éxito en sus cursos y para obtener su potencia en el colegio. Si usted es un estudiante por primera vez, en el colegio, o si usted piensa obtener un certificado, una licencia, o trasladarse a otra universidad,

usted debe de completar su valoración, consejo, y orientación antes de inscribirse en los cursos. Todos los estudiantes están invitadas a participar.

Orientación (En línea electronica o en persona)

Estudiantes de nuevo ingreso se les requiere atender una sesión de orientación que les provee información para mejor oportunidad en el colegio (referirse a la pagina 3 de este horario para fechas de orientación). Usted será informado(a) con un programa de instrucción, servicios de apoyo, y programas del colegio. Usted será presentado(a) con personal y obtendrá información sobre cada departamento. Orientación en línea esta disponible en la pagina www.paloverde.edu

Valoración

Para empezar una carrera con buen éxito en el Colegio de Palo Verde, usted debe de atender la sesión de valoración en donde se le provee pruebas de Inglés, matemáticas, y lectura para ayudarlo a identificar su nivel de habilidad en esa área. (El colegio también suministra una prueba Ingles como Segundo Idioma para estudiantes nuevos con Ingles limitado.)

Consejeros

Un consejero(a) va a revisar con usted sus resultados de valoración, también su expediente académico y su meta educativa. El consejero/a le va asistir para fomentar un plan educativo y horario de clases que le corresponde a su necesidad específica.

Inscripción

Mientras que usted haya completado su valoración, consejo, y orientación, puede inscribirse para los cursos en el tiempo apropiado. Esté seguro de completar el proceso y no deje de inscribirse. Estudiantes deben de hacer cita con un consejero/consejera para su planificación de curso e inscribirse según el horario de clases en el Edificio de Servicios para Estudiantes.





SUPPORT SERVICES

CalWORKs

We are a California Community College program serving CalWORKs students and their families by providing educational and career opportunities combined with an array of high-quality support services that enable students to complete their educational goals, find meaningful employment, and successfully transition into the workforce. Through collaboration and advocacy with our college and community partners, we prepare a segment of California's work force by promoting the economic self-sufficiency of CalWORK's students through the attainment of a higher education.

Cooperative Agencies Resources for Education (CARE)

The Cooperative Agencies Resources for Education is an educational program designed to assist EOPS students who are single parents and receiving assistance from CalWORKS (California Work Opportunities and Responsibilities to Kids). CARE provides moral support, financial assistance for child care, transportation grants, books, and monthly meetings designed to assist single parents with parenting skills and educationally related sources to reach their goals. Family social activities are offered.

Disabled Students Program & Services (DSP&S)

The Disabled Students Program is a state-funded effort to integrate and mainstream disabled students into general campus programs and activities. The ability of each disabled student to function independently in the educational environment is the ultimate goal. The program offers students a range of equipment and services. Please refer to college catalog for additional information.

Extended Opportunity Program and Services (EOPS)

Extended Opportunity Program and Services is a state-funded, special assistance program for students who are socially, economically, and academically or language disadvantaged. EOPS assists students with counseling, book vouchers, priority registration, and support workshops.

Financial Aid

The College's Financial Aid Program consists of scholarships, grants, and work/study jobs. Only United States citizens and permanent residents are eligible for financial aid. Applications for financial aid should be completed during the spring or summer preceding the year the student plans to attend Palo Verde College. Application materials are available at www.fafsa.ed.gov

Eligibility for most of the federal and state student aid program is based on financial need and the "ability to benefit" from the instruction. Please refer to the college catalog for additional information.

Library

The Harry A. Faull library is a vital component of the educational experience at Palo Verde College. Located on the second floor of the College Services Building, the Library provides a peaceful haven for studying or relaxation.

The collection is comprised of approximately 20,000 books, videos and DVD's. Periodicals are available for reading and research. A computer lab provides high-speed access to the Internet as well as word processing and other popular software programs. The library's website: www.paloverde.edu/library provides access to the library catalog as well as to electronic books, subscription databases and full text articles from thousands of magazines, newspapers, and professional journals.

The Virtual Bookstore

Students will find the required textbooks for each course for rent or purchase at www.paloverde.edu. At the end of each term, some books will be eligible for students to sell back to the Virtual Bookstore through the college website as well.

Veterans

Veterans services are provided to assist eligible veterans and their dependents in obtaining their VA educational benefits and achieving their educational goals. The Veterans representative provides information on veterans' benefits and services, assists applicants with completing applications and forms necessary for VA benefits, and assists in resolving VA educational problems.

Veterans seeking enrollment certification to receive educational benefits under the G.I. Bill should contact the Director of Financial Aid & Scholarships as soon as possible. Veterans who do not file for benefits 30 days before the opening of the semester should plan for an additional 6 to 8 week delay in receiving benefits.



GENERAL INFORMATION

Limitations on Enrollment

The Palo Verde Community College District has a curriculum policy regarding prerequisites and corequisites that limits enrollment in courses for students who do not meet the prerequisite or corequisite requirements. For purposes of this policy the following definitions apply:

- A. **"Prerequisite"** means a condition of enrollment that a student is required to meet in order to demonstrate current readiness for enrollment in a course or educational program.
- B. **"Corequisite"** means a condition of enrollment consisting of a course that a student is required to simultaneously take in order to enroll in another course.

Please refer to the course description listed in the college catalog to determine specific enrollment requirements. Students who do not satisfy the requirements will not be permitted to enroll in the course, unless they are approved through the challenge process. See a counselor for further information.

Students will be enrolled in the course pending the outcome of the process. If the challenge is denied, students will be administratively withdrawn from the course, all fees will be refunded, and no drop charges will be made.

NOTE: Students must pass the prerequisite course with a grade of "C" or better.

Attendance - First Meeting

Courses with low enrollment may be canceled after the first class meeting. This makes it extremely important that you and your classmates be officially enrolled in and attend the first meeting of your courses. Course outlines, grading procedures, instructor's expectations, assignments, etc. are normally covered. Get off on the right foot. Be there!

Attendance - In General

A student in a California public community college is expected to attend all sessions of each course. It is the student's responsibility to contact instructors regarding any absences.

The acceptance of an excuse for an absence other than illness or official leave of absence is at the discretion of the individual instructor. The acceptance of an excuse due to illness or strictly unavoidable circumstances may be excused if the cause is explained to the instructor. Any absence, excused or otherwise, in no way relieves the student of the responsibility for completing the work of the course to the satisfaction of the instructor.

Withdrawal From Courses/College

Any student leaving Palo Verde College at any time after registration must formally withdraw from the College through Student Services. Withdrawal from courses is the responsibility of the student by submitting a Student Schedule Change to their counselor. Failure to submit the completed form will result in a failing grade for each course. Please refer to college catalog for additional information.

Late Registration

Students should realize that even though there is some time after courses begin, enrolling late makes it increasingly more difficult to successfully complete the course with each missed class meeting. Additionally, course selection may be extremely limited.

Graduation and Certificates of Achievement

If a student plans to graduate or receive a certificate, they must apply for an evaluation of their records prior to the last official day of registration of the last term they will attend.

Time Conflicts

A time conflict occurs when you attempt to enroll in one or more courses scheduled to meet at the same time. Even an overlap of only five minutes will cause a time conflict. State regulations do not permit any time conflict.

Release of Student Information

Palo Verde College adheres to the policies of the Family Educational Rights and Privacy Act (FERPA) while establishing and maintaining student records. Although the college applies the provisions of FERPA in a strict manner, the law allows the college to release student directory information. Palo Verde College, based on FERPA regulations, designates as directory information the following: name, address, phone number, dates of attendance, major field of study, awards/honor lists/degrees received, class schedule, and most recent institution attended.]





GENERAL INFORMATION

Students have the opportunity to request that their directory information be maintained as confidential. In completing the admission application, or continuing student form, students are provided this opportunity. Please refer to college catalog for additional information.

Drugs

Pursuant to Federal Office of Education directives, the Board of Trustees of Palo Verde College has adopted a Drug-Free College Policy (Board Policy 3550). Information regarding individual responsibility is available upon request.

Classroom Regulations

To provide a quality learning environment for all students, it is the policy of the College to not allow children of students in classrooms during class time nor should children be permitted to roam the campus.

Smoking, eating, or drinking beverages is also not permitted in the classrooms of the College. We appreciate your support and effort in adhering to this policy.

Academic Policies, Procedures & Regulations

All students are responsible to familiarize themselves with the policies, procedures, and regulations of Palo Verde College. The college catalog clearly describes such things as the limits on unit load, minimum unit requirements, English requirements, required laboratories, course prerequisites, refund policies, probation, and dismissal policies. Palo Verde College staff are available to help students meet graduation requirements. However, each student is ultimately responsible for his/her program of study.

Sexual Harassment

The Palo Verde Community College District recognizes that harassment on the basis of sex is a violation of both Federal and State discrimination laws as well as District Policy. The District is committed to providing all employees, applicants for employment and students with an environment free from sexual harassment, and will not tolerate such conduct on the part of any employee or student (Board Policy 3410). Please refer to college catalog for additional information.

Disclaimer

The College reserves the right to change any provision or requirement when such change will serve the interest of the College and its students. The College further reserves the right to ask a student to withdraw when it considers such action appropriate.

Graduation is not guaranteed within any time frame. The Schedule of Courses is not a contract. The College assumes no liability for clerical errors made in production of the schedule.

While every effort is made to publish accurate course listings, changes may become necessary. The College regrets the inconvenience to students when changes are made, however, when circumstances warrant, the college reserves the right to:

- ◆ cancel courses with insufficient enrollment;
- ◆ change course days and times to meet the majority of student needs;
- ◆ close a course to additional enrollment;
- ◆ change a staff assignment.

Added, canceled, and revised courses will be reflected in PVC-Services located on the college website at www.paloverde.edu. Students should refer to PVC-Services whenever scheduling classes.



STUDENT FEES

The Board of Trustees is required to charge each student a state enrollment fee for credit classes. The enrollment fee shall be as specified by the Board of Governors of the California Community Colleges.

Enrollment Fee

The enrollment fee is \$46 per unit for all students with or without a Bachelor’s degree. The enrollment fee is payable when the student registers. When requested by a student on the appropriate form, a full refund shall be made for the class(es) he/she drops during the first ten (10) days of classes of each semester. No refunds shall be made after the first ten (10) days of classes of each semester, unless the program change is a result of action by the District to cancel or reschedule a class(es). One day courses and short courses are fully refundable if the student withdraws before the course begins.

Board of Governors Waiver (BOGW)

The BOGW can offer enrollment fees! In order to prevent the enrollment fee from denying access to students who have limited financial resources, the Board of Governors Waiver (BOGW) is available to waive enrollment fees (not out-of-state tuition). Eligibility criteria is:

- ◆ California resident, and
- ◆ a student or student's family is receiving AFDC, SSI, or General Assistance/General Relief; or
- ◆ a student or student's family is low-income;
- ◆ if you do not qualify by either of the previously mentioned methods and you have received your Student Aid Report (SAR), you may be eligible for an awarded BOGW.

Tuition

California residents are charged an enrollment fee and do not pay tuition.

Non-residents enrolling for credit classes at Palo Verde College will be charged tuition which is due and payable upon registration.

California residents:

All Units.....\$46 per unit

Arizona residents (per Guest Agreement):

All Units.....\$138 per unit
(includes state enrollment fee)

All other non-residents:

Non-resident fee	\$265 per semester unit
+ state enrollment fee	\$46 per unit

Student Parking

There are no parking fees. However, students who park in unauthorized or handicapped parking areas without permission will be cited.

Associated Student Government Fees

The goal of the Associated Student Government (ASG) is to improve and expand services to students. In addition to other privileges, ASG membership entitles you to free or reduced price admission to various activities and discounts for various food and merchandise with local merchants. For further information see ASG in the Supportive Services section of the Student Handbook.

\$10.00 per semester or \$18.00 annually

Other Fees

Transcripts, returned check fee, etc., are discussed in the college catalog.

Enrollment Fee Refunds

When requested by a student, on appropriate form, a full refund of the enrollment fees shall be made for the class he/she drops during the first ten (10) days of classes in the regular semester. No refunds shall be made after the first ten (10) days of classes in each semester unless the program change is the result of action by the District to cancel or reschedule a course that directly impacts the student's program. Workshops, one-day courses, and courses offered in short sections are fully refundable if the student withdraws before the class begins.

Tuition Refunds

When requested by a non-resident student, refunds for official reduction in courses or a complete official withdrawal shall be made according to the following schedule:

First 3 weeks of semester . . .	75%
4th and 5th weeks	50%

No refunds will be made after the fifth week of each regular semester unless the program change is a result of action by the District to cancel or reschedule a class.



APPLY AND REGISTER

HOW DO I APPLY AND REGISTER FOR THE FIRST TIME?

- Step 1. APPLY online at www.paloverde.edu
- Step 2. Orientation (online or face to face) Keep your completed orientation quiz and present it when you take your assessment test.
- Step 3. Complete the ASSESSMENT TEST. Study guides are available at the receptionist desk or online. To schedule an appointment call 760.921.5500.
- Step 4. Apply for FINANCIAL AID. To schedule an appointment call 760.921.5553.
- Step 5. Complete an EDUCATION PLAN. It is important to schedule an appointment with a counselor at least once a semester. To schedule an appointment call 760.921.5500
- Step 6. CalWORKs provides additional assistances for students that qualify. You can call 760.921.5514 for more information.
- Step 7. EOPS/CARE provides additional financial and academic assistance to students that qualify. You can call 760.921.5402 for information.
- Step 8. DSPS provides additional services for students with disabilities. Please contact the DSPS office at 760.921.5489 for more information.
- Step 9. REGISTER for classes online at www.paloverde.edu





ACADEMIC CALENDAR FALL 2019

PALO VERDE COMMUNITY COLLEGE DISTRICT

DAYS OF INSTRUCTION	WK	MON	TUES	WED	THUR	FRI	WK	DESCRIPTION
JULY 2019		1	2	3	4X	5		
		8	9	10	11	12		July 4 - Independence Day
		15	16	17	18	19		July 17 - Last Day to W/D with "W" grade
		22	23	24	25	[26]		July 26 - Last Day of Summer Session
		29	30	31				
AUGUST 15 DAYS OF INSTRUCTION					1	2		
		5	6	7	8f	9f		August 8 & 9 - Flex Days
	1	<12	13	14	15	16		August 12 - Classes Begin
	2	19	20	21	22	23☉		August 23 - Last Day to Register / Refund
	3	26	27	28	29	30☉		Aug. 30 - Last day to W/D without "W" grade
SEPTEMBER 20 DAYS OF INSTRUCTION	4	2X	3✧	4	5	6		September 2 - Labor Day
	5	9	10	11	12	13		September 3 - Census
	6	16	17	18	19	20		
	7	23	24☉	25	26	27		September 24 - Last day to Elect P/NP grade
	8	30						
OCTOBER 22 DAYS OF INSTRUCTION			1	2	3	4		
	9	7	8	9	10	11*		October 11 - Institute Day
	10	14	15	16	17	18		October 11 - End of 9th Week
	11	21	22	23	24	25		
	12	28	29	30	31			
NOVEMBER 18 DAYS OF INSTRUCTION						1		
	13	4	5	6	7	8		November 11 - Veteran's Day
	14	11X	12	13	14	15☉		Nov. 15 - Last Day to W/D with "W" grade
	15	18	19	20	21	22		November 28-29 - Thanksgiving Break
	16	25	26	27	28X	29X		
DECEMBER 2019 10 DAYS OF INSTRUCTION	17	2	3	4	5	6		
	18	9	10	11	12	[13]		December 9-13 - Finals Week
		16	17	18	19	20		December 13 - Last Day of Classes
		23	24♦	25♦	26♦	27♦		December 24 - January 2 / Winter Break
		30♦	31♦					

TOTAL DAYS OF INSTRUCTION (Fall): 85

X = HOLIDAY FOR ALL	< = INSTRUCTION BEGINS	f = FLEX DAYS FOR INSTRUCTORS
♦ = HOLIDAY FOR CLASSIFIED	[] = LAST DAY OF CLASSES	* = INSTITUTE DAY
(+) = HOLIDAY FOR INSTRUCTORS & STUDENTS ONLY	☉ = REG / GRADE DATES	✧ = CENSUS DAYS



METHODS OF INSTRUCTION

Face-To-Face

In a Face-To-Face course 100% of the course is conducted in the traditional classroom/lab with an instructor.

Interactive Television - TELEVISED (ITV)

Instruction is offered via interactive television (closed circuit) to both Blythe students and Needles students. These courses can originate in either Blythe or Needles and are televised in real-time to the other campus.

Correspondence Education

This method of instruction allows students to receive lessons and exercises via the mail or electronic transmission and upon completion, return them for analysis, criticism and grading. Students are separated from the instructor and interaction between them is limited. Instruction may be wholly by correspondence or a combination of home study and residential training. Typically, correspondence courses are self-paced; however there are almost always deadlines that must be adhered to.

Online

All instruction occurs online. Access to e-mail and the Internet is required. Students may be required to complete work using e-mail, chat rooms, discussion boards, and other instructional tools via the Bridge

LEGEND			
M	Monday	CL	Anthony J. Reale Classroom/Lab Center
T	Tuesday	CS	John O. Crain Building
W	Wednesday	FA/PA	Fine and Performing Arts Center
Th	Thursday	NC/B	Needles Center/Rooms
F	Friday	PE	Physical Education Center
S	Saturday	TB	Technical Building
TBA	To be announced	SITE	See Instructor for location
TPHS	Twin Palms High School	BNCC	Blythe Nursing Care Center
♦	Co/Prerequisite and or recommendation—See College Catalog	FIELD	See Instructor for location



SCHEDULE OF CLASSES

ACCOUNTING

<u>Section</u>	<u>Class Title</u>	<u>Units</u>	<u>Days</u>	<u>Hours</u>	<u>Instructor</u>	<u>Room</u>
----------------	--------------------	--------------	-------------	--------------	-------------------	-------------

BLYTHE/NEEDLES TELEVISED CLASSES

ACC-100-01	-Basic Accounting	4	T/TH	12:00 PM—1:50PM	Martinez, P	CL117/B11
------------	-------------------	---	------	-----------------	-------------	-----------

CORRESPONDENCE CLASSES

ACC 100-02	-Basic Accounting	4	ARRANGE	72 HOURS	Martinez, P	
ACC 101-01	♦Principles of Accounting I	4	ARRANGE	72 HOURS	Gaubeca, M.	

ONLINE CLASSES

ACC 102-01	♦Principles of Accounting II	4	ARRANGE	72 HOURS	Martinez, P	
------------	------------------------------	---	---------	----------	-------------	--

AGRICULTURAL CROP SCIENCE

BLYTHE CAMPUS CLASSES

AGR 080-01	-Pesticide Safety	1	M	8:20 PM—9:10 PM	Maxfield, M	CL216
------------	-------------------	---	---	-----------------	-------------	-------

BLYTHE CAMPUS/ONLINE HYBRID

AGR 170-01	-Principles of Entomology	3	M	5:20 PM—8:10 PM	Maxfield, M	CL216
				36 HOURS ONLINE	Maxfield, M	

ALCOHOL AND DRUG STUDIES

BLYTHE CAMPUS CLASSES

ADS 101-01	♦Introduction to Addiction Studies	3	T	8:00AM-10:50AM	Casas, A.	CL117
------------	------------------------------------	---	---	----------------	-----------	-------

CORRESPONDENCE CLASSES

ADS 101-02	♦Introduction to Addiction Studies	3	ARRANGE	54 HOURS	Casas, A.	
ADS 101-03	♦Introduction to Addiction Studies	3	ARRANGE	54 HOURS	Cahill, M.	
ADS 102-01	♦Pharmacology & Physiological effects of Addiction	3	ARRANGE	54 HOURS	Casas, A.	
ADS 102-02	♦Pharmacology & Physiological effects of Addiction	3	ARRANGE	54 HOURS	Redwine, K.	
ADS 102-03	♦Pharmacology & Physiological effects of Addiction	3	ARRANGE	54 HOURS	Singh, E.	
ADS 103-01	♦Case Management and Documentation	3	ARRANGE	54 HOURS	Casas, A.	

This schedule is subject to change. Please review the online schedule at www.paloverde.edu for the most current version.



SCHEDULE OF CLASSES

ALCOHOL AND DRUG STUDIES

CORRESPONDENCE CLASSES

ADS 103-02	♦Case Management and Documentation	3	ARRANGE	54 HOURS	Granillo, C.
ADS 103-03	♦Case Management and Documentation	3	ARRANGE	54 HOURS	Granillo, C.
ADS 104-01	♦Addiction Prevention, Education & Outreach/Referral	3	ARRANGE	54 HOURS	Dagnino, I.
ADS 104-02	♦Addiction Prevention, Education & Outreach/Referral	3	ARRANGE	54 HOURS	Dagnino, I.
ADS 104-03	♦Addiction Prevention, Education & Outreach/Referral	3	ARRANGE	54 HOURS	Marciel, J.
ADS 104-04	♦Addiction Prevention, Education & Outreach/Referral	3	ARRANGE	54 HOURS	Marciel, J.
ADS 104-05	♦Addiction Prevention, Education & Outreach/Referral	3	ARRANGE	54 HOURS	Marciel, J.
ADS 105-01	♦Co-occurring Disorders & Chemical Dependency	3	ARRANGE	54 HOURS	Cahill, M.
ADS 105-02	♦Co-occurring Disorders & Chemical Dependency	3	ARRANGE	54 HOURS	Singh, E.
ADS 106-01	♦Crisis Intervention	3	ARRANGE	54 HOURS	Orenstein, A.
ADS 107-01	♦Group and Family Processes	3	ARRANGE	54 HOURS	Orenstein, A.
ADS 107-02	♦Group and Family Processes	3	ARRANGE	54 HOURS	Orenstein, A.
ADS 108-01	♦Codependency And Family Systems	3	ARRANGE	54 HOURS	Casas, A.
ADS 108-02	♦Codependency And Family Systems	3	ARRANGE	54 HOURS	Lopez, M.
ADS 108-03	♦Codependency And Family Systems	3	ARRANGE	54 HOURS	Singh, A.
ADS 109-01	♦Substance Abuse In Special Populations	3	ARRANGE	54 HOURS	Casas, A.
ADS 109-02	♦Substance Abuse In Special Populations	3	ARRANGE	54 HOURS	Cahill, M.

This schedule is subject to change. Please review the online schedule at www.paloverde.edu for the most current version.



SCHEDULE OF CLASSES

AMERICAN SIGN LANGUAGE

BLYTHE CAMPUS CLASSES

ASL 134-01 ♦American Sign Language III 3 T 5:30 PM—8:20 PM Lopez-Roedel, R CL119

CORRESPONDENCE CLASSES

ASL 131-01	-American Sign Language I	3	ARRANGE	54 HOURS	Hemphill, K.
ASL 131-02	-American Sign Language I	3	ARRANGE	54 HOURS	Hemphill, K.
ASL 131-03	-American Sign Language I	3	ARRANGE	54 HOURS	Burns-Peters, D.
ASL 131-04	-American Sign Language I	3	ARRANGE	54 HOURS	Burns, S.
ASL 131-05	-American Sign Language I	3	ARRANGE	54 HOURS	Lopez, J.
ASL 131-06	-American Sign Language I	3	ARRANGE	54 HOURS	Lopez, J.
ASL 132-01	♦American Sign Language II	3	ARRANGE	54 HOURS	Hemphill, K.
ASL 132-02	♦American Sign Language II	3	ARRANGE	54 HOURS	Burns-Peters, D.
ASL 132-03	♦American Sign Language II	3	ARRANGE	54 HOURS	Burns, S.
ASL 132-04	♦American Sign Language II	3	ARRANGE	54 HOURS	Burns, S.
ASL 132-05	♦American Sign Language II	3	ARRANGE	54 HOURS	Burns-Peters, D.

ANTHROPOLOGY

ONLINE CLASSES

ANT-101-03 -Cultural Anthropology 3 ARRANGE 54 HOURS Shepard, M

CORRESPONDENCE CLASSES

ANT-101-01	-Cultural Anthropology	3	ARRANGE	54 HOURS	Shepard, M
ANT-101-02	-Cultural Anthropology	3	ARRANGE	54 HOURS	Shepard, M.
ANT-101-04	-Cultural Anthropology	3	ARRANGE	54 HOURS	Anderson, D.
ANT-101-05	-Cultural Anthropology	3	ARRANGE	54 HOURS	Anderson, D.
ANT-101-06	-Cultural Anthropology	3	ARRANGE	54 HOURS	Anderson, D.



SCHEDULE OF CLASSES

ART

BLYTHE CAMPUS CLASSES

ART 125-01	-Basic Drawing & Composition	3	T/TH	6:00 PM—8:50 PM	Sloman, J.	FA129
------------	------------------------------	---	------	-----------------	------------	-------

CORRESPONDENCE CLASSES

ART 101-01	-Introduction To Art	3	ARRANGE	54 HOURS	Elledge, B.
ART 110-01	♦Art History & Appreciation I	3	ARRANGE	54 HOURS	Sloman, J
ART 111-01	♦Art History & Appreciation II	3	ARRANGE	54 HOURS	Elledge, B.
ART 111-02	♦Art History & Appreciation II	3	ARRANGE	54 HOURS	Elledge, B.

ASTRONOMY

CORRESPONDENCE CLASSES

AST 105-01	-Astronomy: The Solar System	4	ARRANGE	108 HOURS	Patel, N.
AST 105-02	-Astronomy: The Solar System	4	ARRANGE	108 HOURS	Patel, N.
AST 110-01	-Astronomy: Beyond the Solar System	4	ARRANGE	108 HOURS	Garcia, A
AST 110-02	-Astronomy: Beyond the Solar System	4	ARRANGE	108 HOURS	Garcia, A

AUTOMOTIVE TECHNOLOGY

BLYTHE CAMPUS CLASSES

AUT 100-01	-Introduction to Automotive Technology	3	M/W	7:30 AM—9:20 AM	Rinaldi, H	TB111
			F	7:30AM—8:20 AM	Rinaldi, H	TB111
AUT 101-01	-Basic Technician Skills	3	M/W	9:30 AM—11:20 AM	Rinaldi, H	TB111
			F	9:30 AM—10:20 AM	Rinaldi, H	TB111
AUT 102- 01	-Engine Analysis/Tune-up	3	M/W	12:20 PM—2:10 PM	Rinaldi, H	TB111
			F	12:20 PM—1:10 PM	Rinaldi, H	TB111
AUT 103-01	-Suspension, Steering & Alignment	3	T/TH	12:20 PM—2:10 PM	Rinaldi, H	TB111
			F	1:20 PM—2:10 PM	Rinaldi, H	TB111

This schedule is subject to change. Please review the online schedule at www.paloverde.edu for the most current version.



SCHEDULE OF CLASSES

AUTOMOTIVE TECHNOLOGY

BLYTHE CAMPUS CLASSES

AUT 110-01	-Brake Systems	3	T/TH	7:30 AM—9:20 AM	Rinaldi, H	TB111
			F	8:30 AM—9:20 AM	Rinaldi, H	TB111
AUT 111-01	-Automotive Electrical Systems	3	T/TH	9:30 AM—11:20 AM	Rinaldi, H	TB111
			F	10:30 AM-11:20AM	Rinaldi, H.	TB111

CORRESPONDENCE CLASSES

AUT 108-01	-Engine Performance, Heating & Air-conditioning	3	ARRANGE	54 HOURS	Rinaldi, H	
------------	--	---	---------	----------	------------	--

BIOLOGY

BLYTHE CAMPUS CLASSES

BIO 100-01	-Introduction to Biology	4	T/TH	8:00 AM—9:50 AM	Hartline, R.	CL219
BIO 101-01	-Introduction to Biology Laboratory	1	T	10:00 AM—10:50 AM	Hartline, R.	CL219
			Th	10:00 AM—11:50 AM	Hartline, R.	CL219
BIO-110-01	♦Basics of Biology	4	M/W	1:00 PM—2:30 PM	Hartline, R.	CL219
			W	2:30 PM—5:20 PM	Hartline, R.	CL219
BIO 210-01	♦Human Anatomy	4	M/W	8:00 AM—10:50AM	Osayande, S.	CL216

CORRESPONDENCE CLASSES

BIO-100-02	-Introduction to Biology	4	ARRANGE	72 HOURS	Hartline, R.	
BIO-100-03	-Introduction to Biology	4	ARRANGE	72 HOURS	Hartline, R.	
BIO-100-04	-Introduction to Biology	4	ARRANGE	72 HOURS	Osayande, S	
BIO-100-05	-Introduction to Biology	4	ARRANGE	72 HOURS	Osayande, S	
BIO-100-06	-Introduction to Biology	4	ARRANGE	72 HOURS	Osayande, S	

This schedule is subject to change. Please review the online schedule at www.paloverde.edu for the most current version.



SCHEDULE OF CLASSES

BIOLOGY

CORRESPONDENCE CLASSES

BIO 100-07	-Introduction to Biology	4	ARRANGE	72 HOURS	Bram, J.
BIO 100-09	-Introduction to Biology	4	ARRANGE	72 HOURS	Osayande, S
BIO 100-10	-Introduction to Biology	4	ARRANGE	72 HOURS	Velickovska, V.
BIO 100-11	-Introduction to Biology	4	ARRANGE	72 HOURS	Velickovska, V.

BUILDING CONSTRUCTION TECHNOLOGY

BLYTHE CAMPUS CLASSES

BCT 100-01	-Intro. To Building Trades	3	T/TH	9:30AM—11:20 AM	Lozoya, C.	TB117
			F	9:30AM—10:20AM	Lozoya, C.	TB117
BCT 112-01	-Basic Electricity	3	T/TH	12:20PM— 2:10PM	Lozoya, C	TB117
			F	12:20-1:10PM	Lozoya, C	TB117
BCT 200-01	-Cabinetry I	3	M/W	9:30 AM—11:20 AM	Lozoya, C	TB117
			F	10:30 AM—11:20 AM	Lozoya, C	TB117
BCT 201-01	-Cabinetry II	3	M/W	12:20 PM—2:10 PM	Lozoya, C	TB117
			F	1:20 PM—2:10 PM	Lozoya, C	TB117
BCT 202-01	-Finish Cabinetry	3	T/TH	6:00 PM—8:20 PM	Lozoya, C	TB117

CORRESPONDENCE CLASSES

BCT 116-01	-Basic House Wiring Theory	3	ARRANGE	54 HOURS	Lozoya, C.
BCT 116-02	-Basic House Wiring Theory	3	ARRANGE	54 HOURS	Rhoades, M.
BCT 117 01	-Residential Plumbing Theory	3	ARRANGE	54 HOURS	Rhoades, M.
BCT 203-01	-Photovoltaic Installation Theory	4	ARRANGE	72 HOURS	Rhoades, M.

This schedule is subject to change. Please review the online schedule at www.paloverde.edu for the most current version.



SCHEDULE OF CLASSES

BUSINESS

BLYTHE/NEEDLES TELEVISED

BUS-101-01	-Intro. To Business	3	W	5:20PM-8:10PM	Martinez, P.	CL 117/B11
------------	---------------------	---	---	---------------	--------------	------------

CORRESPONDENCE CLASSES

BUS 101-02	-Intro. to Business	3	ARRANGE	54 HOURS	Frid, S
BUS 101-03	-Intro. to Business	3	ARRANGE	54 HOURS	McClure, N.
BUS 101-04	-Intro. to Business	3	ARRANGE	54 HOURS	Thiebaut, B.
BUS 101-05	-Intro. to Business	3	ARRANGE	54 HOURS	Frid, S.
BUS 101-06	-Intro. to Business	3	ARRANGE	54 HOURS	Gallan, S.
BUS 101-07	-Intro. to Business	3	ARRANGE	54 HOURS	Mendez, D.
BUS 101-08	-Intro. to Business	3	ARRANGE	54 HOURS	Mendez, D.
BUS 101-09	-Intro. to Business	3	ARRANGE	54 HOURS	McClure, N.
BUS 103-01	-Personal Finance	3	ARRANGE	54 HOURS	Gaubeca, M.
BUS 105-01	-Business Mathematics	3	ARRANGE	54 HOURS	Thiebaut, B.
BUS 105-02	-Business Mathematics	3	ARRANGE	54 HOURS	Thiebaut, B.
BUS 105-03	-Business Mathematics	3	ARRANGE	54 HOURS	Pickens, R.
BUS 105-04	-Business Mathematics	3	ARRANGE	54 HOURS	Pickens, R.
BUS-135-01	-Business Law	3	ARRANGE	54 HOURS	Martinez, P.
BUS-201-01	♦Principles of Organizational Leadership	3	ARRANGE	54 HOURS	Mann, C.
BUS-202-01	-Business Communication	3	ARRANGE	54 HOURS	Frid, S.
BUS-202-02	-Business Communication	3	ARRANGE	54 HOURS	Frid, S.
BUS-206-01	-Marketing	3	ARRANGE	54 HOURS	McClure, N.
BUS-210-01	♦Business Ethics	3	ARRANGE	72 HOURS	Martinez, P.

This schedule is subject to change. Please review the online schedule at www.paloverde.edu for the most current version.



SCHEDULE OF CLASSES

CHILD DEVELOPMENT

BLYTHE OFF-SITE CLASSES

CHD 227-01	-Parenting Principles & Communications	1	T	5:30 PM—7:20PM	Alford/Williams	RBES
------------	--	---	---	----------------	-----------------	------

(Class dates: 10/08/19—12/10/19)

BLYTHE / NEEDLES TELEVISED

CHD 215-01	-Administration 1: Programs in Early Childhood	3	TH	5:20 PM—8:10 PM	Kehl, M.	CL117/B08
------------	--	---	----	-----------------	----------	-----------

ONLINE CLASSES

CHD 101-01	-Child Growth and Development	3	ARRANGE	54 HOURS	Wallace, H.	
CHD 102-01	-Child, Family & The Community	3	ARRANGE	54 HOURS	Wallace, H.	
CHD 103-01	-Intro to Curriculum	3	ARRANGE	54 HOURS	Wallace, H.	
CHD 107-01	-Teaching in Diversity Society	3	ARRANGE	54 HOURS	Wallace, H.	
CHD 220-01	-Infant & Toddler Development	3	ARRANGE	54 HOURS	Wallace, H.	

COMPUTER INFORMATION SYSTEMS

BLYTHE CAMPUS CLASSES

CIS 123-01	-Web Page Design Tools	3	M/W	9:30AM—11:20 AM	Peterson, S	CL130
			F	10:30 AM—11:20AM	Peterson, S	CL130
CIS 130-01	-Introduction to 3D Computer Animation	3	M/W	7:30AM—9:20 AM	Peterson, S	CL130
			F	8:30 AM—9:20AM	Peterson, S	CL130
CIS 131-01	-Animation Principles and Production I	3	T/TH	7:30 AM—9:20 AM	Peterson, S	CL130
			F	7:30 AM—8:20AM	Peterson, S	CL130
CIS-201-01	-Intro. To 3D Printing, Set-up & prototype Design	3	M/W	12:20 PM—2:10 PM	Peterson, S	CL130
			F	1:20 PM --2:10 PM	Peterson, S	CL130

This schedule is subject to change. Please review the online schedule at www.paloverde.edu for the most current version.

Palo Verde College 2019 Fall Schedule of Classes — 23



SCHEDULE OF CLASSES

COMPUTER INFORMATION SYSTEMS

BLYTHE CAMPUS CLASSES

CIS 202-01	-3D Printing: Basic Model Making	3	T/TH	12:20 PM—2:10 PM	Peterson, S	CL130
			F	12:20 PM—1:10 PM	Peterson, S	CL130
CIS 265-01	-Adobe Photoshop	3	T/TH	9:30 AM— 11:20 AM	Peterson, S.	CL130
			F	9:30 AM-10:20 AM	Peterson, S.	CL130

CORRESPONDENCE CLASSES

CIS 101-01	-Introduction to Computers & Information Systems	3	ARRANGE	54 HOURS	Peterson, S.	
------------	--	---	---------	----------	--------------	--

CRIMINAL JUSTICE

BLYTHE CAMPUS CLASSES

CRJ 103-01	♦Criminal Law	3	M	5:20 PM—8:10 PM	Smith, W	CL202
CRJ 115-01	-Intro. To Law Enforcement/Correction	3	T	5:20 PM-- 8:10 PM	Smith, W.	CL202
CRJ 125-01	-Report Writing	3	TH	6:00 PM— 8:50 PM	Hudson, V.	CL124

ONLINE

CRJ 130-01	-Alcohol, Narcotics and Drug Abuse	3	ARRANGE	54 HOURS	Smith, W.	
------------	------------------------------------	---	---------	----------	-----------	--

ECONOMICS

BLYTHE/NEEDLES ITV CLASSES

ECO 106-01	♦Principles of Microeconomics	3	M	5:20 PM—8:10 PM	Gaubeca, M	CL117/B11
------------	-------------------------------	---	---	-----------------	------------	-----------

CORRESPONDENCE

ECO 106-02	♦Principles of Microeconomics	3	ARRANGE	54 HOURS	Gaubeca, M.	
ECO 106-03	♦Principles of Microeconomics	3	ARRANGE	54 HOURS	Gaubeca, M.	
ECO 106-04	♦Principles of Microeconomics	3	ARRANGE	54 HOURS	Gaubeca, M.	

This schedule is subject to change. Please review the online schedule at www.paloverde.edu for the most current version.



SCHEDULE OF CLASSES

ENGLISH

BLYTHE CAMPUS CLASSES

ENG 099-01	♦Basic Composition	3	T/TH	9:30AM—10:50 AM	Blansett, W.	CL119
ENG 100-01	♦Reading and Composition with Supplemental Support	4	M/W	3:00 PM—4:50 PM	Brown, T.	CL127
ENG 100-02	♦Reading and Composition with Supplemental Support	4	T/TH	9:00 AM—10:50 AM	Brown, T.	CL127
ENG 101-01	♦Reading And Composition	3	M/W	9:30AM—10:50 AM	Castillo, R.	CL119
ENG 101-02	♦Reading And Composition	3	M/W	1:30 PM—2:50 PM	Castillo, R.	CL119
ENG 101-03	♦Reading And Composition	3	M/W	5:00 PM—6:20 PM	Castillo, R.	CL119
ENG 101-06	♦Reading And Composition	3	T/TH	1:30 PM—2:50 PM	Brown, T.	CL127
ENG 103-01	♦Critical Thinking & English Composition	3	M	5:20PM-8:10PM	Thiebaux, B.	CL124
ENG 120 01	♦Introduction To Creative Writing	3	T	12:00 PM—2:50 PM	Castillo, R.	CL119

ONLINE CLASSES

ENG 099-02	♦Basic Composition	3	ARRANGE	54 HOURS	Lilley-Edgerton, D.	
ENG 101-04	♦Reading And Composition	3	ARRANGE	54 HOURS	Castillo, R.	

CORRESPONDENCE CLASSES

ENG 099-03	♦Basic Composition	3	ARRANGE	54 HOURS	Blansett, W.	
ENG 100-03	♦Reading and Composition with Supplemental Support	4	ARRANGE	72 HOURS	Stoeckle, S.	
ENG 100-04	♦Reading and Composition with Supplemental Support	4	ARRANGE	72 HOURS	Stoeckle, S.	
ENG 101-05	♦Reading & Composition	3	ARRANGE	54 HOURS	Castillo, R.	
ENG 101-07	♦Reading & Composition	3	ARRANGE	54 HOURS	Brown, T.	
ENG 101-08	♦Reading & Composition	3	ARRANGE	54 HOURS	Brown, T.	
ENG 101-09	♦Reading & Composition	3	ARRANGE	54 HOURS	Thiebaux, B.	

This schedule is subject to change. Please review the online schedule at www.paloverde.edu for the most current version.



SCHEDULE OF CLASSES

ENGLISH

CORRESPONDENCE CLASSES

ENG 101-11	♦Reading & Composition	3	ARRANGE	54 HOURS	Stoeckle, S.
ENG 101-12	♦Reading & Composition	3	ARRANGE	54 HOURS	Blansett, W.
ENG 103-02	♦Critical Thinking & English Composition	3	ARRANGE	54 HOURS	Robertson, R.
ENG 103-03	♦Critical Thinking & English Composition	3	ARRANGE	54 HOURS	Lilley-Edgerton, D
ENG 120 -02	♦Introduction To Creative Writing	3	ARRANGE	54 HOURS	Castillo, R.

ENGLISH AS A SECOND LANGUAGE

BLYTHE CAMPUS CLASSES

ESL 081-01	♦Beginning Language II	3	TH	10:30 AM—1:20 PM	Gamez, M	FA101
ESL 096-01	♦Advance Language I	3	T	5:20 PM—8:10 PM	Gamez, M	FA119

GENERAL STUDIES

BLYTHE CAMPUS CLASSES

GES-115-01	- The Master Student	3	M/W	10:50 AM—12:10 PM	Dagnino, I.	CL117/B11
GES-115-02	- The Master Student	3	W	11:00 AM—1:50 PM	Rivera, M.	CL124

GENERAL STUDIES

CORRESPONDENCE CLASSES

GES-115-03	- The Master Student	3	ARRANGE	54 HOURS	Rivera, M.
GES 115-05	- The Master Student	3	ARRANGE	54 HOURS	Lopez, M.
GES 115-06	- The Master Student	3	ARRANGE	54 HOURS	Lopez, M.
GES 115-07	- The Master Student	3	ARRANGE	54 HOURS	Breaux, K.
GES 115-08	- The Master Student	3	ARRANGE	54 HOURS	Breaux, K.

This schedule is subject to change. Please review the online schedule at www.paloverde.edu for the most current version.



SCHEDULE OF CLASSES

GENERAL STUDIES

CORRESPONDENCE CLASSES

GES 115-09	- The Master Student	3	ARRANGE	54 HOURS	Breaux, K.
GES 115-10	- The Master Student	3	ARRANGE	54 HOURS	Rivera, H.
GES 115-11	- The Master Student	3	ARRANGE	54 HOURS	Rivera, H.
GES 115-12	- The Master Student	3	ARRANGE	54 HOURS	Rivera, H.
GES 115-13	- The Master Student	3	ARRANGE	54 HOURS	Lujano, L.
GES 115-14	- The Master Student	3	ARRANGE	54 HOURS	Lujano, L.
GES 115-15	- The Master Student	3	ARRANGE	54 HOURS	Silva, D.

GEOGRAPHY

CORRESPONDENCE CLASSES

GEO 101-02	- Physical Geography	4	ARRANGE	108 HRS	Lara, G.
GEO 101-03	- Physical Geography	4	ARRANGE	108 HRS	Lara, G.
GEO 101-04	- Physical Geography	4	ARRANGE	108 HRS	Tovares, C.
GEO 101-05	- Physical Geography	4	ARRANGE	108 HRS	Clinton, P.
GEO 103-01	- World Geography	3	ARRANGE	54 HOURS	Clinton, P.
GEO 103-02	- World Geography	3	ARRANGE	54 HOURS	Tovares, C.

ONLINE CLASSES

GEO 101-01	- Physical Geography	4	ARRANGE	108 HRS	Martin, L.
------------	----------------------	---	---------	---------	------------

GEOLOGY

BLYTHE CAMPUS CLASSES

GEL 101-01	-Physical Geology	4	T/TH	8:00AM—10:50	Martin, R.	CL223
------------	-------------------	---	------	--------------	------------	-------

CORRESPONDENCE CLASSES

GEL 105-02	- Natural Disasters	3	ARRANGE	54 HOURS	Martin, R.
------------	---------------------	---	---------	----------	------------

ONLINE CLASSES

GEL 105-01	- Natural Disasters	3	ARRANGE	54 HOURS	Martin, R.
------------	---------------------	---	---------	----------	------------

This schedule is subject to change. Please review the online schedule at www.paloverde.edu for the most current version.



SCHEDULE OF CLASSES

HEALTH EDUCATION

BLYTHE CAMPUS CLASSES

HEA 140-01 - Health Education	3	T/TH	11:00 AM—12:20 PM	Snider, G	CL124
-------------------------------	---	------	-------------------	-----------	-------

CORRESPONDENCE CLASSES

HEA 140-02 - Health Education	3	ARRANGE	54 HOURS	Snider, G	
HEA 140-03 - Health Education	3	ARRANGE	54 HOURS	Snider, G	
HEA 140-04 - Health Education	3	ARRANGE	54 HOURS	Snider, G	
HEA 140-05 - Health Education	3	ARRANGE	54 HOURS	Snider, G.	
HEA 140-06 - Health Education	3	ARRANGE	54 HOURS	Cyr, J.	
HEA 140-07 - Health Education	3	ARRANGE	54 HOURS	Cyr, J.	
HEA 140-08 - Health Education	3	ARRANGE	54 HOURS	Cyr, J.	

HISTORY

BLYTHE/NEEDLES TELEVISED

HIS 130-01 ♦American History I	3	T/TH	8:00AM-9:20AM	Eoff, K.	FA119/B11
--------------------------------	---	------	---------------	----------	-----------

ONLINE CLASSES

HIS 125-02 -California History	3	ARRANGE	54 HOURS	Eoff, K.	
HIS 130-03 ♦American History I	3	ARRANGE	54 HOURS	Eoff, K.	

HISTORY

CORRESPONDENCE CLASSES

HIS 110-01 ♦World Civilization I	3	ARRANGE	54 HOURS	Jones, T.	
HIS 110-02 ♦World Civilization I	3	ARRANGE	54 HOURS	Hoyt, A.	
HIS 110-03 ♦World Civilization I	3	ARRANGE	54 HOURS	Hoyt, A.	
HIS 115-01 -Current Events	3	ARRANGE	54 HOURS	Jones, T.	
HIS 125-01 -California History	3	ARRANGE	54 HOURS	Eoff, K	
HIS 125-03 -California History	3	ARRANGE	54 HOURS	Jones, T.	
HIS 130-02 ♦American History I	3	ARRANGE	54 HOURS	Eoff, K	

This schedule is subject to change. Please review the online schedule at www.paloverde.edu for the most current version.



SCHEDULE OF CLASSES

MANAGEMENT

CORRESPONDENCE CLASSES

MAN 105-01	♦Principles of Management & Organizations	3	ARRANGE	54 HOURS	Gallan, S.
MAN 105-02	♦Principles of Management & Organizations	3	ARRANGE	54 HOURS	Gallan, S.
MAN 106-01	-Personnel Management	3	ARRANGE	54 HOURS	Frid, S.
MAN 106-02	-Personnel Management	3	ARRANGE	54 HOURS	Frid, S.
MAN 107- 01	♦Small Business Management	3	ARRANGE	54 HOURS	Mann, C.
MAN 107- 02	♦Small Business Management	3	ARRANGE	54 HOURS	Mann, C.
MAN 145-02	-Organizational Behavior	3	ARRANGE	54 HOURS	Frid, S.

MATHEMATICS

BLYTHE CAMPUS CLASSES

MAT 095-01	-Pre-College Algebra	5	T/TH	5:30PM—8:00PM	Sher, S.	CL128
MAT 095-02	-Pre-College Algebra	5	M/W	5:30PM—8:00PM	Patel, N.	CL129
MAT 106-01	♦Statistics	4	M/W	5:20PM—7:10PM	Garcia, A.	CL127
MAT 106-02	♦Statistics	4	T/TH	5:20 PM—7:10PM	Garcia, A.	CL127
MAT 108-01	♦Liberal Arts Mathematics	3	M/W	5:30 PM—6:50PM	Sher, S.	CL128
MAT 110-01	♦College Algebra	4	M/W	5:20PM—7:10PM	Shibalovich, P.	CL130

CORRESPONDENCE

MAT 110-02	♦College Algebra	4	ARRANGE	72 HOURS	Shibalovich, P.
MAT 110-03	♦College Algebra	4	ARRANGE	72 HOURS	Sher, S.
MAT 210-01	♦Precalculus	5	ARRANGE	90 HOURS	Shibalovich, P.

This schedule is subject to change. Please review the online schedule at www.paloverde.edu for the most current version.



SCHEDULE OF CLASSES

MUSIC

BLYTHE CAMPUS CLASSES

MUS-131-01	-Classroom Piano I	1	TH	5:30 PM—7:20 PM	Singler-Wilson, J	FA117
MUS-131-02	-Classroom Piano I	1	T/TH	12:15 PM—1:20PM	Singler-Wilson, J	FA117
MUS-132-01	-Classroom Piano II	1	TH	5:30 PM—7:20 PM	Singler-Wilson, J	FA117
MUS 132-02	-Classroom Piano II	1	T/TH	12:15 PM—1:15 PM	Singler-Wilson, J	FA117
MUS-137-01	-History of Rock And Roll	3	T/TH	9:30AM-10:50 AM	Singler-Wilson, J	FA115
MUS-161-01	-Concert Choir I	1	W	6:00 PM—7:50 PM	Singler-Wilson, J	FA115
MUS-162-01	-Concert Choir II	1	W	6:00 PM—7:50 PM	Singler-Wilson, J	FA115
MUS-261-01	-Concert Choir III	1	W	6:00 PM—7:50 PM	Singler-Wilson, J	FA115
MUS-262-01	-Concert Choir IV	1	W	6:00 PM—7:50 PM	Singler-Wilson, J	FA115

CORRESPONDENCE CLASSES

MUS 121-01	-Music History and Appreciation	3	ARRANGE	54 HOURS	Singler-Wilson, J	
MUS 121-02	-Music History and Appreciation	3	ARRANGE	54 HOURS	Singler-Wilson, J	

NURSING SCIENCES CLINICAL

BLYTHE CAMPUS CLASSES

NSC 130-01	-Phlebotomy Technician	3	TH	1:20 PM-4:50 PM	Copple, D.	CL224
NSC 132-01	♦Phlebotomy Technician Practical Experience	1	TBA	TBA	Miranda, M.	SITE

CORRESPONDENCE CLASSES

NSC-128-01	-Medical Terminology	3		54 HOURS	Bavaro-Ricci, A.	
NSC-128-02	-Medical Terminology	3		54 HOURS	Bavaro-Ricci, A.	

This schedule is subject to change. Please review the online schedule at www.paloverde.edu for the most current version.



SCHEDULE OF CLASSES

NURSING

BLYTHE CAMPUS CLASSES

NUR-100-01	-Certified Nursing Assistant- -Lecture	3	TH	9:00 AM—11:50 AM	Copple, D.	CL215
NUR-106-01	◆Introduction to Pharmacology II	2	M	5:20PM—7:10PM	Miranda, M.	CL215
NUR-109-01	◆Medical-Surgical Nursing I- - Lecture	10	M/T	9:00 AM—1:50 PM	Copple, D.	CL215
NUR-118-01	◆Certified Nursing Assistant- -Clinical	3	T	8:00 AM—4:30 PM (8/12/19— 9/06/19)	Flud, R.	CL224/ BPA
			T	6:30 AM—3:00 PM (9/09/19-12/13/19)	Flud, R.	CL224/ BPA
NUR-118-02	◆Certified Nursing Assistant— Clinical	3	W	8:00 AM—4:30 PM (8/12/19— 9/06/19)	Perez, L.	CL224/ BPA
			W	6:30A M—3:00 PM (9/09/19-12/13/19)	Perez, L	CL224/ BPA
NUR-124-01	◆Medical-Surgical Nursing I- -Clinical	5	W/TH	8:00 AM—4:30PM	Bavaro-Ricci, A.	SITE

PHILOSOPHY

BLYTHE CAMPUS CLASSES

PHI 100-01	-Introduction to Philosophy	3	T	2:20 PM-5:10 PM	Robertson, R	CL124
------------	-----------------------------	---	---	-----------------	--------------	-------

CORRESPONDENCE CLASSES

PHI 100-02	-Introduction to Philosophy	3		54 HOURS	Robertson, R	
------------	-----------------------------	---	--	----------	--------------	--

PHYSICAL EDUCATION

BLYTHE CAMPUS CLASSES

PHE 100-01	-Fitness Center	1	T/TH	4:00 PM—5:20 PM	Snider, G	PE126
PHE 155-01	-Basketball	1	W	5:00 PM—7:50 PM	Snider, G	PE104
PHE-184-01	-Beginning Adaptive Activity	1	T/TH	12:00 PM—1:15 PM	Snider, G	PE104

POLITICAL SCIENCE

ONLINE CLASSES

POS 145-02	◆American Political Institutions	3	ARRANGE	54 HOURS	Eoff, K	
------------	----------------------------------	---	---------	----------	---------	--

CORRESPONDENCE CLASSES

POS 145-01	◆American Political Institutions	3	ARRANGE	54 HOURS	Eoff, K	
------------	----------------------------------	---	---------	----------	---------	--

This schedule is subject to change. Please review the online schedule at www.paloverde.edu for the most current version.



SCHEDULE OF CLASSES

PSYCHOLOGY

BLYTHE CAMPUS CLASSES

PSY-101-01	♦General Psychology	3	T	5:20 PM—8:10 PM	Redwine, K	CL215
PSY-201-01	♦Lifespan Development	3	W	5:20 PM—8:10 PM	Redwine, K	CL215

CORRESPONDENCE CLASSES

PSY 101-02	♦General Psychology	3	ARRANGE	54 HOURS	Smith, W.
PSY 101-03	♦General Psychology	3	ARRANGE	54 HOURS	Redwine, K.
PSY 101-04	♦General Psychology	3	ARRANGE	54 HOURS	Granillo, C.
PSY 110-01	♦Personal & Social Adjustment I	3	ARRANGE	54 HOURS	Smith, W.
PSY 110-02	♦Personal & Social Adjustment I	3	ARRANGE	54 HOURS	Alsobrook, R.
PSY 110-03	♦Personal & Social Adjustment I	3	ARRANGE	54 HOURS	Alsobrook, R.
PSY 115-01	♦Human Sexuality	3	ARRANGE	54 HOURS	Redwine, K.
PSY 155-01	♦Introduction to Statistical Analysis for Soc. Sciences	3	ARRANGE	54 HOURS	Alsobrook, R.
PSY 201-02	♦Lifespan Development	3	ARRANGE	54 HOURS	Redwine, K.
PSY 205-01	♦Introduction to Biological Psychology	3	ARRANGE	54 HOURS	Redwine, K.
PSY-220-01	♦Counseling & Interviewing	3	ARRANGE	54 HOURS	Smith, W.
PSY-220-02	♦Counseling & Interviewing	3	ARRANGE	54 HOURS	Smith, W.
PSY-220-03	♦Counseling & Interviewing	3	ARRANGE	54 HOURS	Snyder, K.
PSY-220-04	♦Counseling & Interviewing	3	ARRANGE	54 HOURS	Snyder, K.

This schedule is subject to change. Please review the online schedule at www.paloverde.edu for the most current version.



SCHEDULE OF CLASSES

SOCIOLOGY

BLYTHE CAMPUS CLASSES

SOC-111-01	♦Marriage and the Family	3	TH	5:20 PM—8:10 PM	Costilla, C	CL119
------------	--------------------------	---	----	-----------------	-------------	-------

CORRESPONDENCE CLASSES

SOC 101-01	♦Introduction to Sociology	3	ARRANGE	54 HOURS	Medina, C.	
SOC 101-02	♦Introduction to Sociology	3	ARRANGE	54 HOURS	Medina, C.	
SOC 101-03	♦Introduction to Sociology	3	ARRANGE	54 HOURS	Costilla, C.	

SPANISH

BLYTHE CAMPUS / ONLINE CLASSES

SPA 101-01	-Elementary Spanish I	5	T	5:00 PM—7:15 PM	Medina, C.	FA101
				45 HOURS	Medina, C.	Online Sessions

ONLINE CLASSES

SPA-101-03	-Elementary Spanish I	5	ARRANGE	90 HOURS	Medina, C.	
------------	-----------------------	---	---------	----------	------------	--

CORRESPONDENCE CLASSES

SPA 101-02	-Elementary Spanish I	5	ARRANGE	90 HOURS	Medina, C.	
SPA 102-01	♦Elementary Spanish II	5	ARRANGE	90 HOURS	Arriaga-Sosa, G.	
SPA 102-02	♦Elementary Spanish II	5	ARRANGE	90 HOURS	Arriaga-Sosa, G.	

SPEECH

BLYTHE / NEEDLES TELEVISED CLASSES

SPE-101-01	♦Introduction to Speech	3	M/W	12:00 PM—1:15 PM	Lilley-Edgerton, D	CL202/B10
SPE-101-02	♦Introduction to Speech	3	T/TH	12:30 PM—1:45 PM	Lilley-Edgerton, D	CL202/B10

Note: Course Requirement for Correspondence sections—Students must have the ability to video record speeches with an audience and send them to the instructor. When possible, students will speak in front of a face-to-face speech class.

This schedule is subject to change. Please review the online schedule at www.paloverde.edu for the most current version.



SCHEDULE OF CLASSES

SPEECH

CORRESPONDENCE CLASSES

SPE 101-03	♦Introduction to Speech	3	ARRANGE	54 HOURS	Montenegro, D
SPE 101-04	♦Introduction to Speech	3	ARRANGE	54 HOURS	Sabbara, M.
SPE 105-01	- Intro. to Intercultural Communication	3	ARRANGE	54 HOURS	Lilley-Edgerton, D.
SPE 105-02	-Intro. to Intercultural Communication	3	ARRANGE	54 HOURS	Montenegro, D.
SPE 105-03	-Intro. to Intercultural Communication	3	ARRANGE	54 HOURS	Sabbara, M

ONLINE CLASSES

SPE 103-01	♦Argumentation & Debate	3	ARRANGE	54 HOURS	Montenegro, D
------------	-------------------------	---	---------	----------	---------------

Note: Course Requirement for Correspondence sections—Students must have the ability to video record speeches with an audience and send them to the instructor. When possible, students will speak in front of a face-to-face speech class.

THEATRE ARTS

BLYTHE CAMPUS CLASSES

THA 151-01	-Acting I	3	M/W	1:30 PM—2:45 PM	Stoeckle, S	PA 107
THA-191-01	♦Rehearsal & Performance in Production	1	M/W	5:00 PM—6:20 PM	Stoeckle, S	PA107
THA-191-02	♦Rehearsal & Performance in Production	2	M/W	3:30 PM—6:20 PM	Stoeckle, S	PA107

*Note: One-day courses and short courses are fully refundable if the student withdraws before the course begins.

This schedule is subject to change. Please review the online schedule at www.paloverde.edu for the most current version.



SCHEDULE OF CLASSES

WELDING

BLYTHE CAMPUS CLASSES

WEL 100-01	-Oxyacetylene Gas Welding	3	M/W	7:30 AM—9:20 AM	Boire, J.	TB 110
			F	8:30 AM—9:20 AM	Boire, J	TB110
WEL 101-01	-Shielded Metal Arc Welding	3	T/TH	7:30 AM—9:20 AM	Boire, J	TB110
			F	7:30 AM—8:20 AM	Boire, J	TB110
WEL 102-01	-Basic Gas Metal Arc Welding	3	M/W	12:20 PM—2:10 PM	Boire, J.	TB 110
			F	1:20 PM—2:10 PM	Boire, J	TB110
WEL 103-01	-Basic Gas Tungsten Arc Welding	3	T/TH	12:20 PM—2:10 PM	Boire, J.	TB 110
			F	12:20 PM—1:10 PM	Boire, J	TB110
WEL 200-01	-Advanced Gas Metal Arc Welding	3	M/W	9:30 AM—11:20 AM	Boire, J	TB110
			F	10:30 AM—11:20 AM	Boire, J	TB110
WEL-201-01	-Advanced Gas Tungsten Arc Welding	3	T/TH	9:30 AM—11:20 AM	Boire, J	TB110
			F	9:30 AM—10:20 AM	Boire, J	TB110

CORRESPONDENCE CLASSES

WEL-121-01	-Resistance Welding & Special Welding Applications	3	ARRANGE	54 HOURS	Boire, J	
------------	--	---	---------	----------	----------	--

This schedule is subject to change. Please review the online schedule at www.paloverde.edu for the most current version.



NON-CREDIT CLASSES

BLYTHE CAMPUS

ADULT BASIC EDUCATION

ABE 040-01	-Computers Made Simple	0	MW	12:50 PM—2:20 PM	Gamez, M.	FA101
(Class dates: 8/12/19—9/23/19)						
ABE 040-02	-Computers Made Simple	0	MW	12:50 PM—2:20 PM	Gamez, M.	FA101
(Class dates: 9/25/19—11/04/19)						
ABE 040-03	-Computers Made Simple	0	MW	12:50 PM—3:00 PM	Gamez, M.	FA101
(Class dates: 11/06/19—12/13/19)						
ABE 059-01	-Creative Stitchery	0	W	12:00 PM—12:50PM	Bequer, R.	FA127
ABE 081-01	-ESL Entry Level II	0	T/TH	9:00 AM—10:20 AM	Gamez, M.	FA101
ABE 081-02	-ESL Entry Level II	0	TH	5:20 PM—8:10 PM	Gamez, M.	FA119
ABE 081-03	-ESL Entry Level II	0	T	5:20 PM—8:10 PM	Gamez, M.	FA119
ABE 090-01	-ESL Entry Level I	0	M	5:20 PM—8:10 PM	Gamez, M	FA119

NON-CREDIT BASIC EDUCATION

NBE-016-01	-Supplemental Skills For Non-Credit ESL	0	TH	10:30 AM—1:20 PM	Gamez, M	FA101
NBE 021-01	-Theatre Rehearsal & Performance	0	M/W	3:30 PM—6:30PM	Stoeckle, S.	PA107
NBE 036-01	-Instrumental Ensemble	0	M	6:00PM—8:00PM	Singler-Wilson, J.	FA106
NBE 039-01	-Basic Principles of Quilting	0	T	5:00 PM-7:50PM	Bequer, R.	FA127
NBE 039-02	-Basic Principles of Quilting	0	W	9:00AM— 11:50AM	Bequer, R.	FA127
NBE-070-01	-Citizenship for Immigrants	0	W	3:10 PM—5:10 PM	Gamez, M	FA101
(Class dates: (8/12/19-10/09/19)						
NBE-070-02	-Citizenship for Immigrants	0	W	3:10 PM—5:10 PM	Gamez, M	FA101
Class dates: (10/16/19—12/13/19)						

This schedule is subject to change. Please review the online schedule at www.paloverde.edu for the most current version.



NON-CREDIT CLASSES

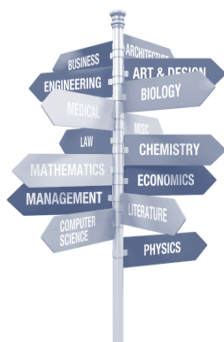
BLYTHE CAMPUS CLASSES

NBE 073-01	-Classroom Piano	0	TH	5:30 PM—7:30 PM	Singler-Wilson, J.	FA117
NBE 073-02	-Classroom Piano	0	T/TH	12:15 PM—1:15 PM	Singler-Wilson, J.	FA117
NBE 076-01	-Vocal Ensemble	0	W	6:00 PM—8:00 PM	Singler-Wilson, J.	FA117
NBE 098-01	-Preparatory Mathematics	0	M/W	3:30 PM—5:20 PM	Shibalovich, P.	CL130
(Class dates: 8/12/19—10/11/19)						
NBE 098-02	-Preparatory Mathematics	0	T/TH	1:20 PM—2:50 PM	Sher, S.	
(Class dates: 8/12/19—10/11/19)						
NBE 098-03	-Preparatory Mathematics	0	M/W	3:00 PM—4:50 PM	Sher, S.	
(Class dates: 10/14/19—12/13/19)						
NBE 098-04	-Preparatory Mathematics	0	T/TH	1:20 PM—3:10 PM	Sher, S.	
(Class dates: 10/14/19—12/13/19)						

NEEDLES CAMPUS

NON-CREDIT BASIC EDUCATION

NBE 039-03	-Basic Principles of Quilting	0	W	8:30 AM—11:20 AM	Elledge, C.	B15
------------	-------------------------------	---	---	------------------	-------------	-----



Selecting
a **College
Major**



This schedule is subject to change. Please review the online schedule at www.paloverde.edu for the most current version.



SCHEDULE PLANNING SHEET

	MONDAY	TUESDAY	WEDNESDAY	THURSDAY	FRIDAY	SATURDAY
8:00						
8:30						
9:00						
9:30						
10:00						
10:30						
11:00						
11:30						
12:00						
12:30						
1:00						
1:30						
2:00						
2:30						
3:00						
3:30						
4:00						
4:30						
5:00						
5:30						
6:00						
6:30						
7:00						
7:30						
8:00						
8:30						
9:00						
9:30						
10:00						

Your text

.....

.....

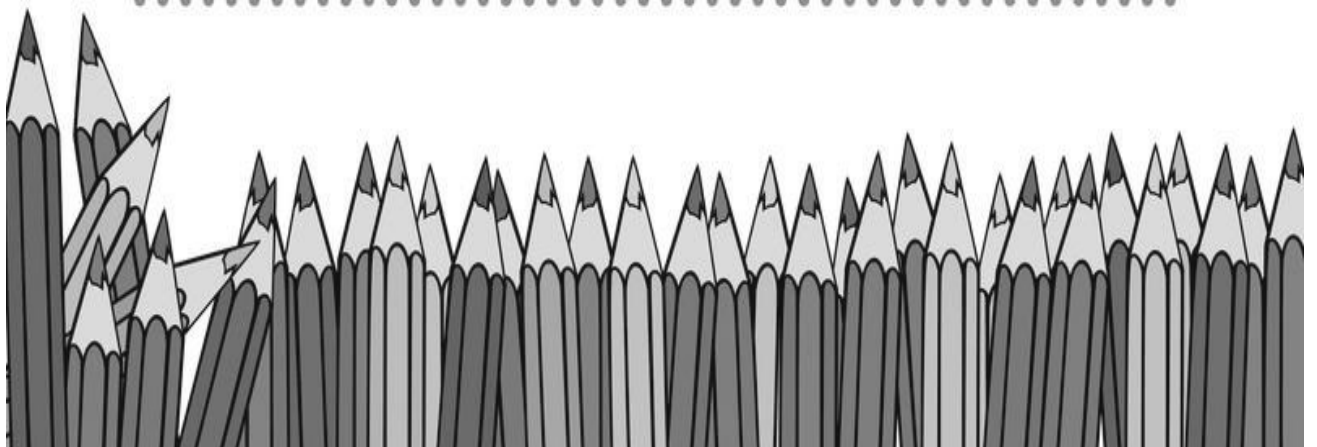
.....

.....

dreamstime.

.....

.....



Enter Your Next Chapter

A dark blue silhouette of a person wearing a graduation cap, facing right. The silhouette is positioned on the left side of the poster, with its head and shoulders visible. The background is a light blue gradient with faint white geometric shapes.

**ENROLL NOW AT
PALO VERDE COLLEGE**

MORE INFO

**www.paloverde.edu
(760) 921-5500**

ADDRESS

**1 COLLEGE DRIVE
BLYTHE, CA 92225**

Like and Follow us:

